

Smart Meter ACCURACY Fact Sheet

FirstEnergy[®]

Ohio Edison • The Illuminating Company • Toledo Edison

FirstEnergy's Ohio electric companies – Ohio Edison, Toledo Edison and The Illuminating Company – are continuing to install smart meters as part of an ongoing investment, [approved by the Public Utilities Commission of Ohio](#), to modernize the electric distribution system. This step toward a more modernized electric system will enable automated meter readings and may enhance our ability to respond to outages faster and more efficiently.

With a smart meter, you will have access to more detailed energy information, including through our online Home Energy Analyzer tool that will help you better understand your electricity use – which means you can then make informed decisions on how to manage and control your electricity consumption.

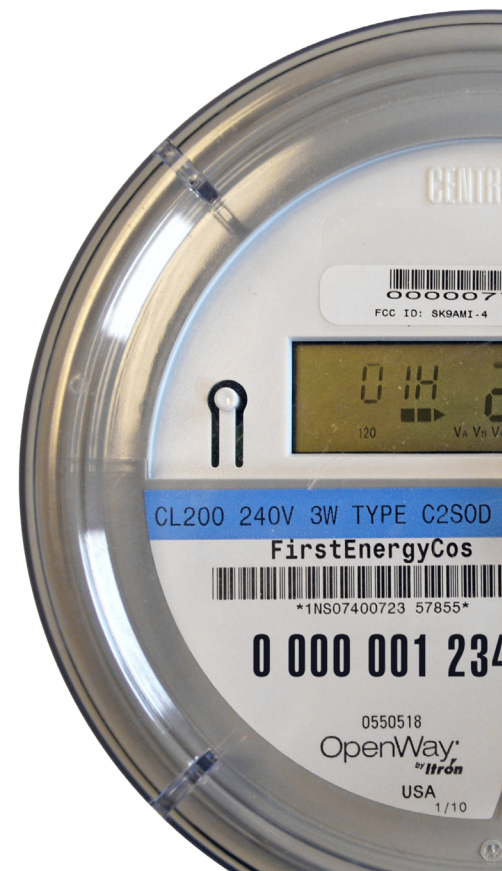
As with any new technology, you may have questions about how a smart meter works. The following FAQs discuss how smart meters accurately report your electric usage. For additional information, please visit firstenergycorp.com/Ohiosmartmeter.

Q | How does a smart meter work?

A | Our smart meters send readings electronically to a network of receivers that are installed on poles. Energy consumption data for utility billing purposes is collected and transmitted a few times a day using short, extremely low-power radio transmissions through a wireless network system. These electronic transmissions nearly eliminate the need for meter readers to record your meter's usage because the readings are automated.



Be assured that the smart meter technology being implemented has been rigorously tested and demonstrated by manufacturers to be accurate, safe and secure in systems throughout the country.



Q | How do you ensure that my neighbor's data won't be confused with mine?

A | The technology systems that support smart meter systems have extensive data validation processes to protect the accuracy of your billing records. In addition, smart meters must meet rigorous requirements for accuracy, which were developed by the American National Standards Institute (ANSI). National Institute of Standards and Technology (NIST)-certified test equipment also is required to verify initial and continuing smart meter accuracy.

A study by an independent testing group found that 99.91 percent of smart meters were accurate within 0.5 percent.¹

In addition, we will monitor the data transmitted from our smart meters to verify that electricity usage is within expected ranges.

Q | How do I know that the electricity usage information being sent to my electric company is accurate?

A | Data collected from a meter and transmitted wirelessly contains specific, unique identifiers associated with the customer's meter number and service address. These fields are validated numerous times to ensure accuracy before the data is used for billing.

For additional information, please visit firstenergycorp.com/Ohiosmartmeter.

1. Edison Electric Institute, "Smart Meters and Smart Meter Systems: A Metering Industry Perspective," March 2011.