

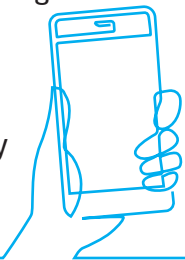
## Faster Home Charging with Level 2



Looking to install a Level 2 charger at home? We can help simplify your charger installation by referring you to an independent, professional electrician. Even better, if you qualify, you may be able to pay for their work over time with no down payment simply by adding it to your monthly electric bill.

### Available Electrical Services

- Level 2 EV chargers for purchase
- Installation of Level 2 EV chargers
- 240 volt wiring to your electrical panel
- Circuit breaker addition or panel upgrade if necessary



To request a free quote, call **1-800-505-SAVE**  
or visit [firstenergycorp.com/products](https://www.firstenergycorp.com/products).





Whether you already have an electric car, or are considering buying one, Level 2 charging at home can be up to 10 times faster than a Level 1 trickle charger and most cars can be fully charged in 3-6 hours.

To request a free quote, call  
**1-800-505-SAVE** or visit  
**[firstenergycorp.com/products](https://www.firstenergycorp.com/products)**.

**Met-Ed**<sup>®</sup>  
A FirstEnergy Company

**Penelec**<sup>®</sup>  
A FirstEnergy Company

**PennPower**<sup>®</sup>  
A FirstEnergy Company

**WestPenn**<sup>®</sup>  
**Power**  
A FirstEnergy Company



©2023 FirstEnergy Corp. These non-basic consumer programs can be withdrawn anytime without prior notice. All non-basic services are performed by an independent contractor that is neither an affiliate, nor an agent of FirstEnergy Corp. or its affiliated companies, (FirstEnergy), including the local electric utility company that provides your electric distribution service. **FirstEnergy does not provide any warranty on the non-basic consumer product or the services performed and is not liable for damages or injuries that may arise as a result of the non-basic consumer product or the services provided.** You are not required to purchase non-basic consumer products or services in order to receive the same quality service from your local electric utility company. Your decision to purchase or not purchase this non-basic consumer product or service will not influence the delivery of retail electric service to you by FirstEnergy. Charges for these non-basic consumer programs and services will appear after the charges for basic utility services and will be distinctly separate from those basic service charges. For Pennsylvania customers, these FirstEnergy non-basic consumer products and services are not regulated by the Pennsylvania Public Utility Commission.

COMM10201-01-24-AI-S3M