



| | | | |
|--|---------------------------|--|--------------------------------------|
| | Substation | | Existing Transmission ROW |
| | Field Note | | 230 kV |
| | School | | 115/138 kV |
| | Pull Site/Lay Down Area | | < 115 kV |
| | Access Road | | Distribution Line |
| | Access Road Option | | Existing Tower |
| | Preferred Route | | Parcel boundaries displayed in white |
| | Preferred Route (Rebuild) | | Local/Private Conservation |
| | | | State Parks/State Conservation |
| | | | Department of Defense |
| | | | Municipal Boundary |
| | | | County Boundary |

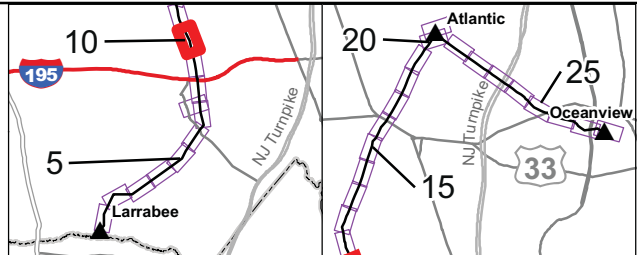
Tile 11 of 30



DRK-Exhibit 11K
Preliminary Access Roads

0 100 200 300 400 500 Feet

Data Sources: ESRI, 2012; USGS 2012, NJDEP, 2012
 Geographic Coordinate System: NAD_1983_StatePlane_New_Jersey_FIPS_2900_Feet
 Datum: North American Datum of 1983 (NAD83)
 Projection: Transverse Mercator
 Linear Unit: Foot_US
 Ellipsoid: Geodetic Reference System 80.



Oceanview 230 kV Transmission Line Reinforcement Project

Jersey Central Power & Light
 January 15, 2014

Jersey Central Power & Light
 A FirstEnergy Company

Existing RR Bridge (Concrete)

W HURLER POND RD

ROUTE 524

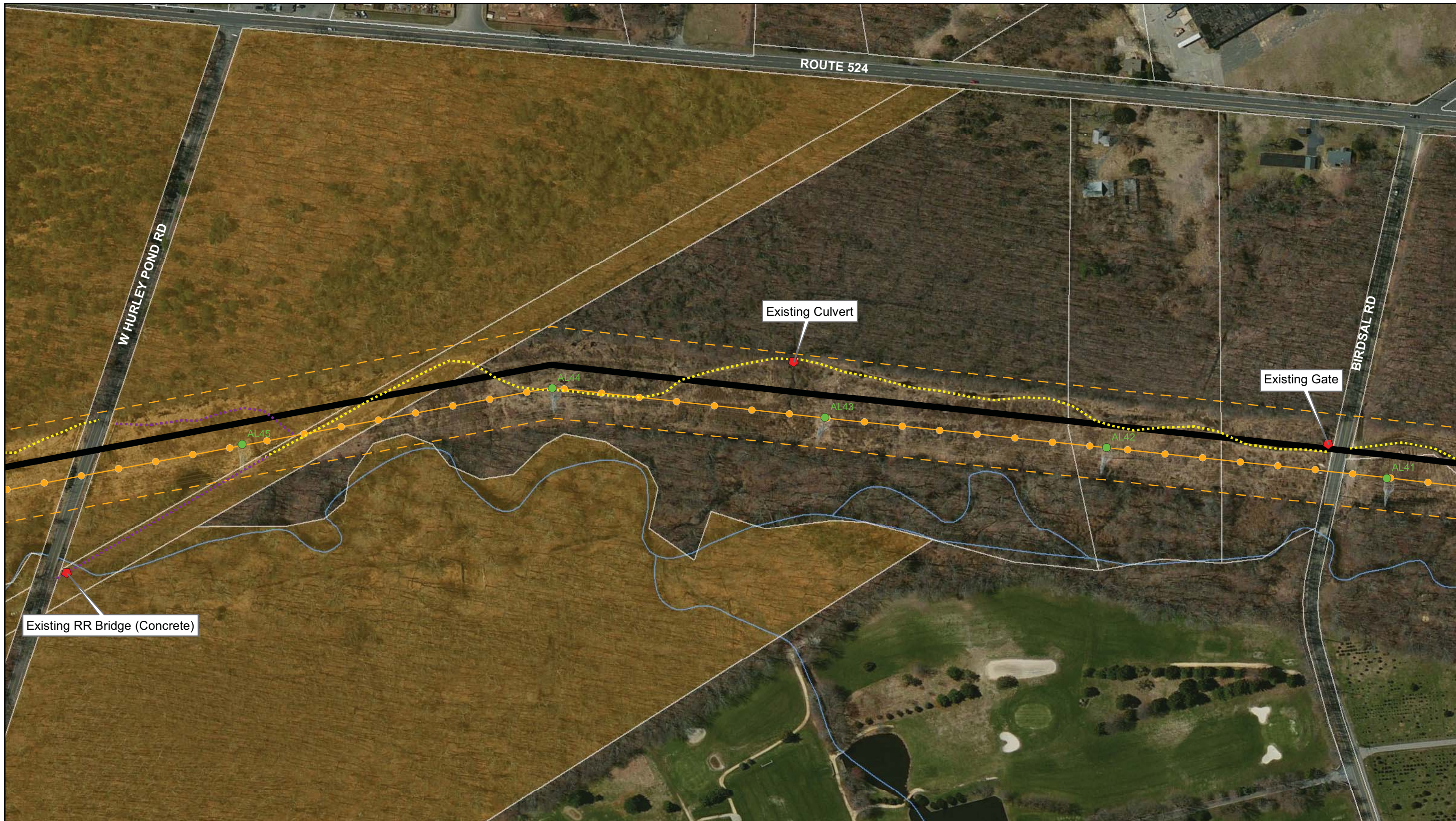
AL50

AL49

AL48

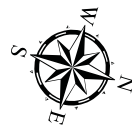
AL47

AL46



| | | | | | |
|--|---------------------------|--|------------------------------|--|--------------------------------------|
| | Substation | | Existing Transmission 230 kV | | Existing Transmission ROW |
| | Field Note | | 115/138 kV | | Municipal Boundary |
| | School | | < 115 kV | | County Boundary |
| | Pull Site/Lay Down Area | | Distribution Line | | Department of Defense |
| | Access Road | | Existing Tower | | State Parks/State Conservation |
| | Access Road Option | | | | Local/Private Conservation |
| | Preferred Route | | | | Parcel boundaries displayed in white |
| | Preferred Route (Rebuild) | | | | |

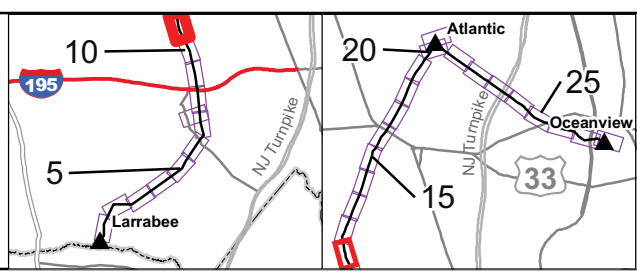
Tile 12 of 30



DRK-Exhibit 11L
Preliminary Access Roads

0 100 200 300 400 500 Feet

Data Sources: ESRI, 2012; USGS 2012, NJDEP, 2012
 Geographic Coordinate System: NAD_1983_StatePlane_New_Jersey_FIPS_2900_Feet
 Datum: North American Datum of 1983 (NAD83)
 Projection: Transverse Mercator
 Linear Unit: Foot_US
 Ellipsoid: Geodetic Reference System 80.



Oceanview 230 kV Transmission Line Reinforcement Project

Jersey Central Power & Light
 January 15, 2014

Jersey Central Power & Light
 A FirstEnergy Company



| | | |
|---------------------------|----------------------------------|--------------------------------------|
| Substation | Existing Transmission 230 kV | Existing Transmission ROW |
| Field Note | Existing Transmission 115/138 kV | Municipal Boundary |
| School | Existing Transmission < 115 kV | County Boundary |
| Pull Site/Lay Down Area | Distribution Line | Department of Defense |
| Access Road | Existing Tower | State Parks/State Conservation |
| Access Road Option | | Local/Private Conservation |
| Preferred Route | | Parcel boundaries displayed in white |
| Preferred Route (Rebuild) | | |

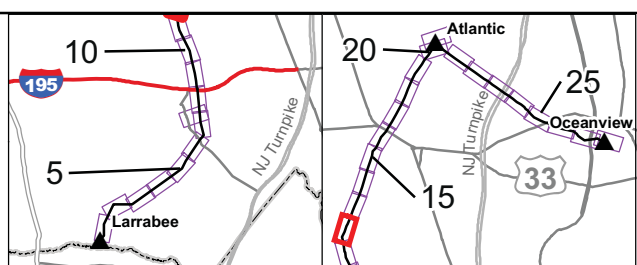
Tile 13 of 30



DRK-Exhibit 11M Preliminary Access Roads

0 100 200 300 400 500 Feet

Data Sources: ESRI, 2012; USGS 2012, NJDEP, 2012
Geographic Coordinate System: NAD_1983_StatePlane_New_Jersey_FIPS_2900_Feet
Datum: North American Datum of 1983 (NAD83)
Projection: Transverse Mercator
Linear Unit: Foot_US
Ellipsoid: Geodetic Reference System 80.



Oceanview 230 kV Transmission Line Reinforcement Project

Jersey Central Power & Light
January 15, 2014

A FirstEnergy Company



| | | | |
|--|----------------------------------|--|--------------------------------------|
| | Substation | | Existing Transmission ROW |
| | Field Note | | Municipal Boundary |
| | School | | County Boundary |
| | Pull Site/Lay Down Area | | Department of Defense |
| | Access Road | | State Parks/State Conservation |
| | Access Road Option | | Local/Private Conservation |
| | Preferred Route | | Parcel boundaries displayed in white |
| | Preferred Route (Rebuild) | | |
| | Existing Transmission 230 kV | | |
| | Existing Transmission 115/138 kV | | |
| | Existing Transmission < 115 kV | | |
| | Distribution Line | | |
| | Existing Tower | | |

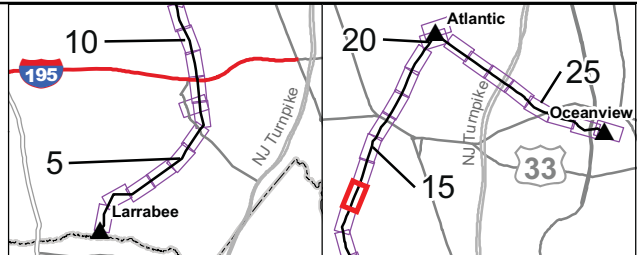
Tile 14 of 30



DRK-Exhibit 11N
Preliminary Access Roads

0 100 200 300 400 500 Feet

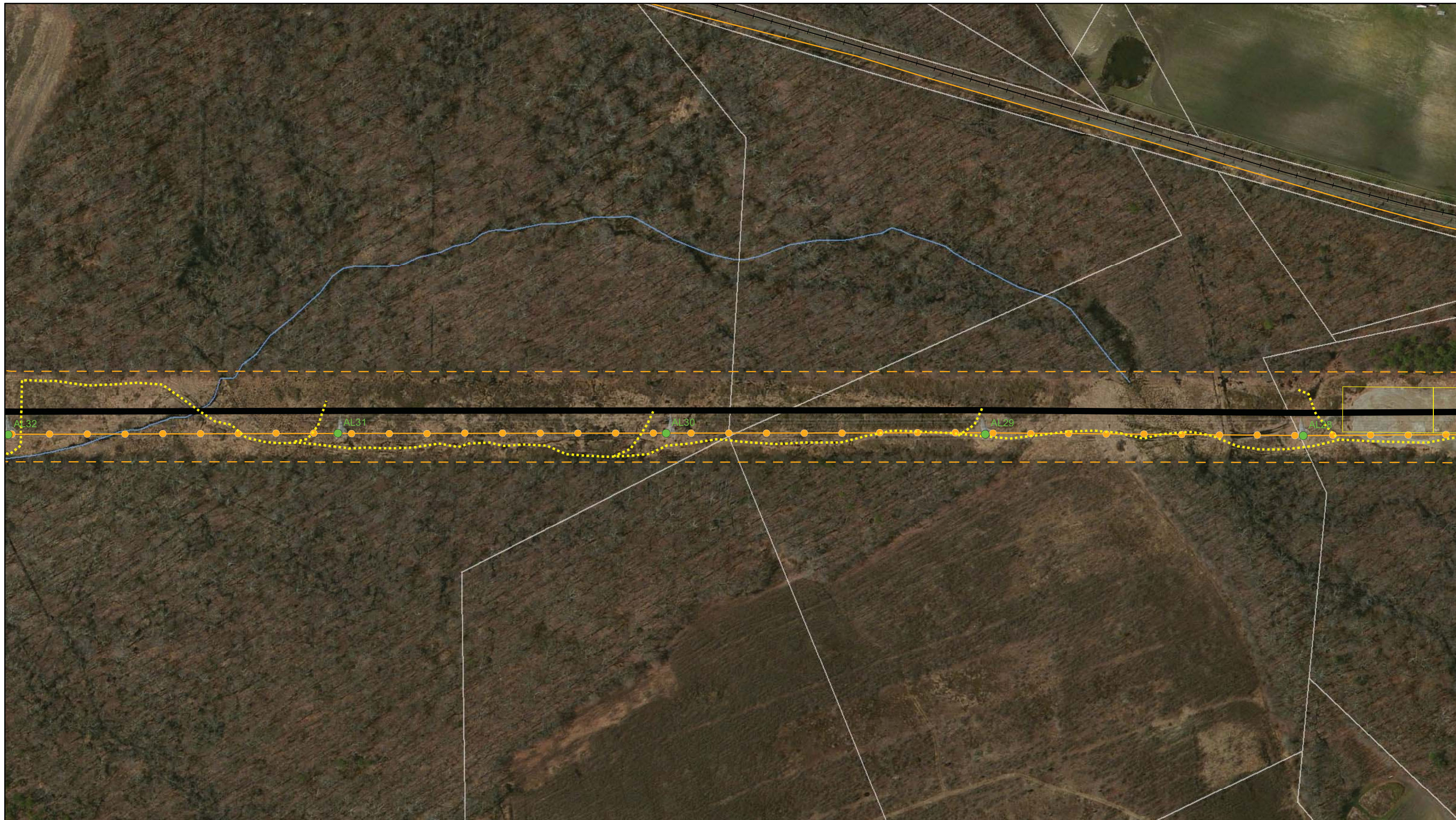
Data Sources: ESRI, 2012; USGS 2012, NJDEP, 2012
 Geographic Coordinate System: NAD_1983_StatePlane_New_Jersey_FIPS_2900_Feet
 Datum: North American Datum of 1983 (NAD83)
 Projection: Transverse Mercator
 Linear Unit: Foot_US
 Ellipsoid: Geodetic Reference System 80.



Oceanview 230 kV Transmission Line Reinforcement Project

Jersey Central Power & Light
 January 15, 2014

Jersey Central Power & Light
 A FirstEnergy Company



| | | | |
|--|---------------------------|--------------------------------------|--------------------------------|
| | Substation | | Existing Transmission ROW |
| | Field Note | | Municipal Boundary |
| | School | | County Boundary |
| | Pull Site/Lay Down Area | | Department of Defense |
| | Access Road | | State Parks/State Conservation |
| | Access Road Option | | Local/Private Conservation |
| | Preferred Route | Parcel boundaries displayed in white | |
| | Preferred Route (Rebuild) | | |

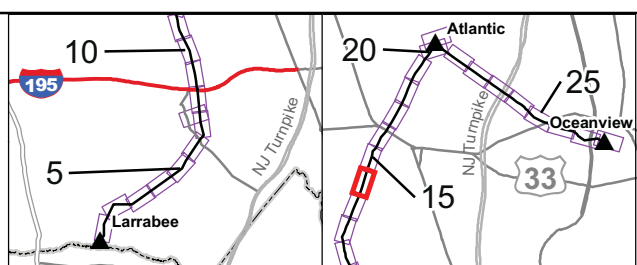
Tile 15 of 30



DRK-Exhibit 110
Preliminary Access Roads

0 100 200 300 400 500 Feet

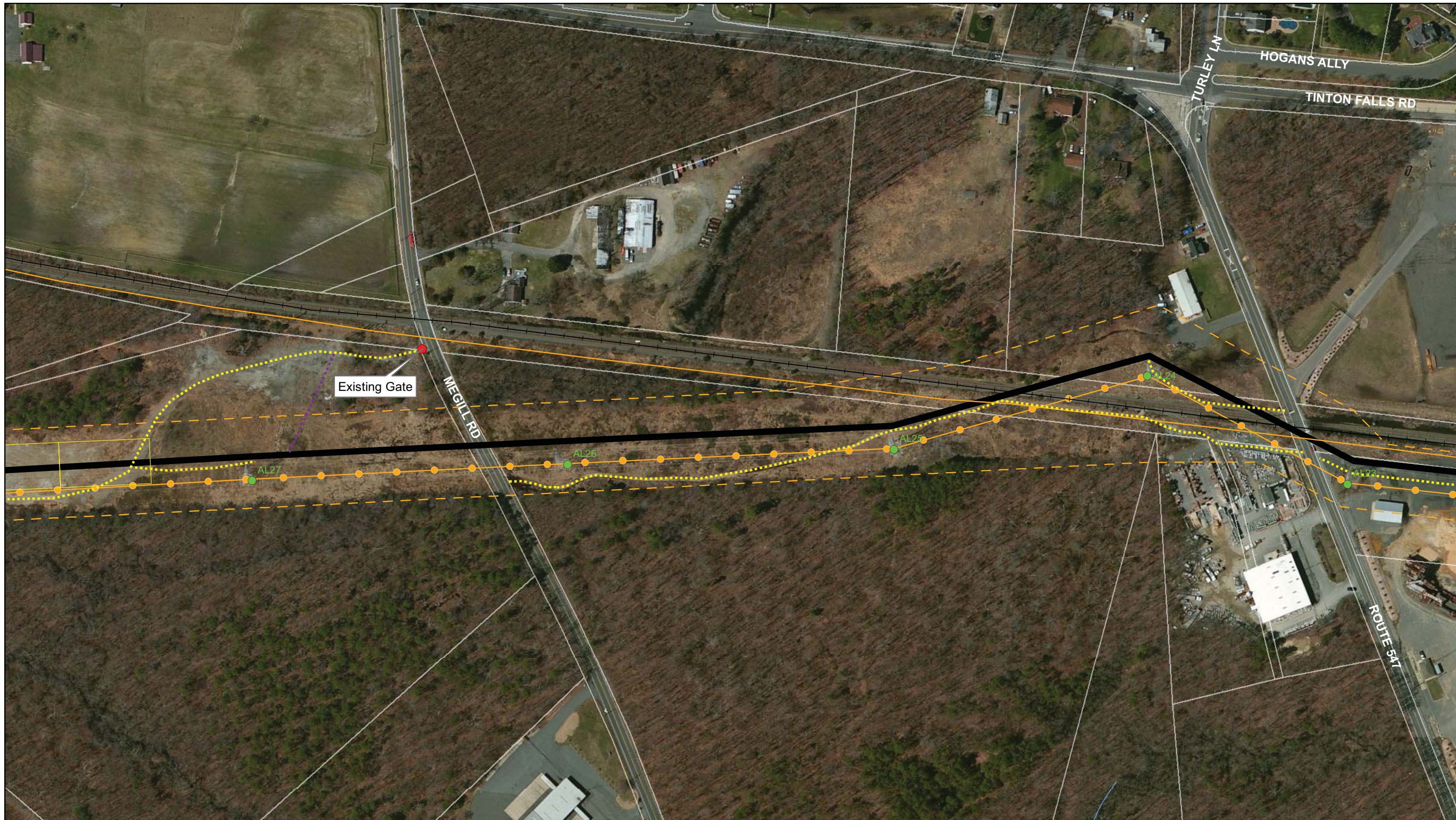
Data Sources: ESRI, 2012; USGS 2012, NJDEP, 2012
Geographic Coordinate System: NAD_1983_StatePlane_New_Jersey_FIPS_2900_Feet
Datum: North American Datum of 1983 (NAD83)
Projection: Transverse Mercator
Linear Unit: Foot_US
Ellipsoid: Geodetic Reference System 80.



Oceanview 230 kV Transmission Line Reinforcement Project

Jersey Central Power & Light
January 15, 2014

Jersey Central Power & Light
A FirstEnergy Company



| | | | |
|--|----------------------------------|--------------------------------------|--------------------------------|
| | Substation | | Existing Transmission ROW |
| | Field Note | | Municipal Boundary |
| | School | | County Boundary |
| | Pull Site/Lay Down Area | | Department of Defense |
| | Access Road | | State Parks/State Conservation |
| | Access Road Option | | Local/Private Conservation |
| | Preferred Route | Parcel boundaries displayed in white | |
| | Preferred Route (Rebuild) | | |
| | Existing Transmission 230 kV | | |
| | Existing Transmission 115/138 kV | | |
| | Existing Transmission < 115 kV | | |
| | Distribution Line | | |
| | Existing Tower | | |

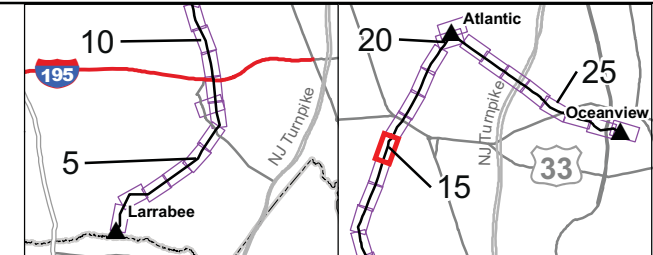
Tile 16 of 30



DRK-Exhibit 11P Preliminary Access Roads

0 100 200 300 400 500 Feet

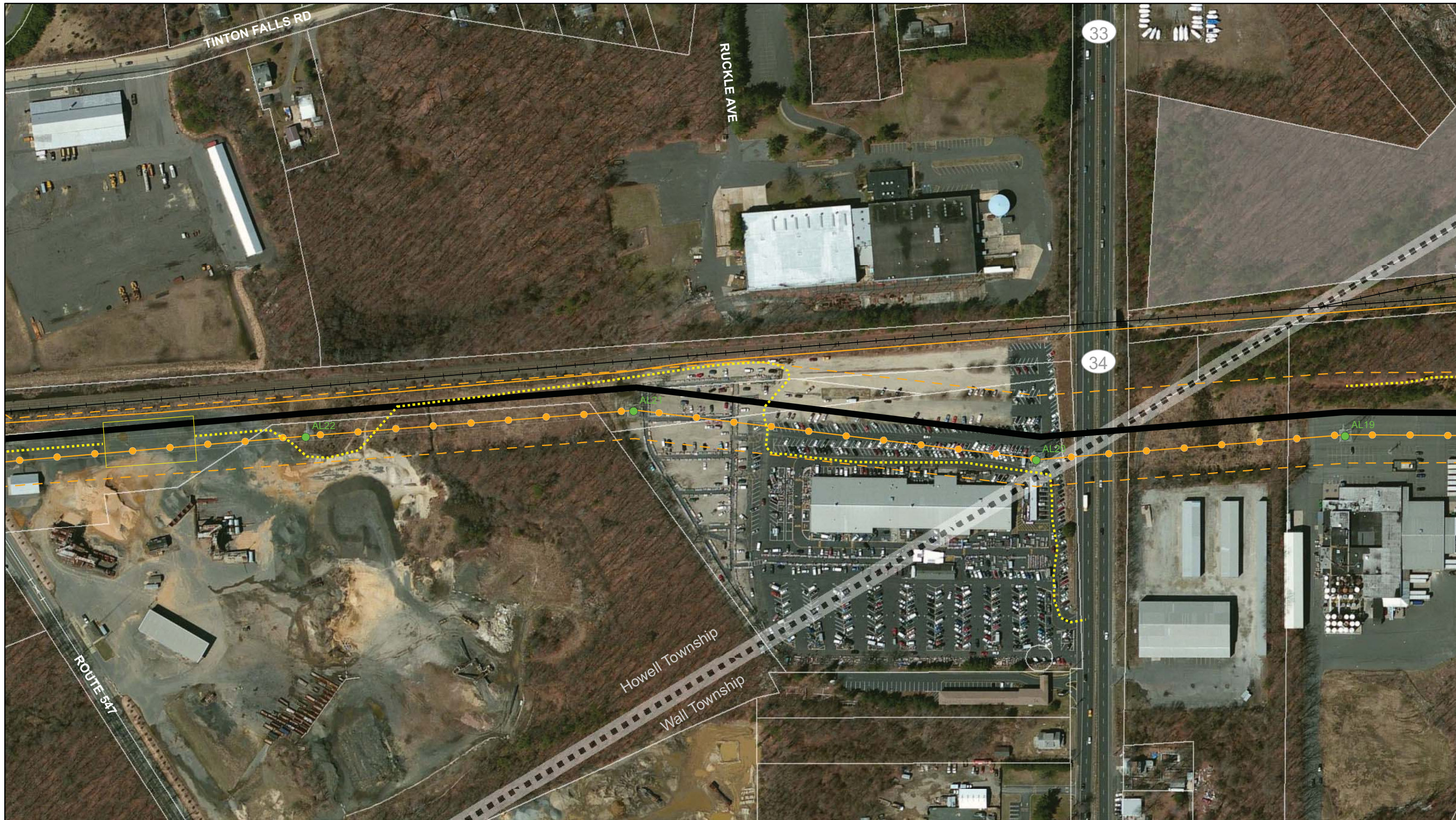
Data Sources: ESRI, 2012; USGS 2012, NJDEP, 2012
Geographic Coordinate System: NAD_1983_StatePlane_New_Jersey_FIPS_2900_Feet
Datum: North American Datum of 1983 (NAD83)
Projection: Transverse Mercator
Linear Unit: Foot_US
Ellipsoid: Geodetic Reference System 80.



Oceanview 230 kV Transmission Line Reinforcement Project

Jersey Central Power & Light
January 15, 2014

A FirstEnergy Company



| | | |
|---------------------------|----------------------------------|--------------------------------------|
| Substation | Existing Transmission 230 kV | Existing Transmission ROW |
| Field Note | Existing Transmission 115/138 kV | Municipal Boundary |
| School | Existing Transmission < 115 kV | County Boundary |
| Pull Site/Lay Down Area | Distribution Line | Department of Defense |
| Access Road | Existing Tower | State Parks/State Conservation |
| Access Road Option | | Local/Private Conservation |
| Preferred Route | | Parcel boundaries displayed in white |
| Preferred Route (Rebuild) | | |

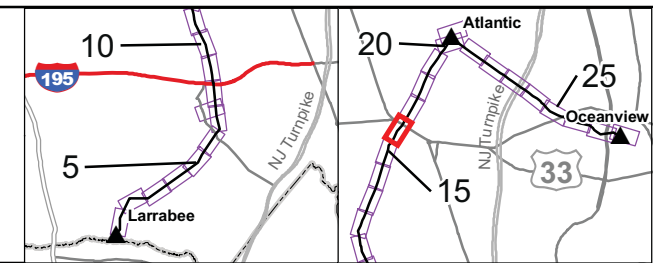
Tile 17 of 30



DRK-Exhibit 11Q
Preliminary Access Roads

0 100 200 300 400 500 Feet

Data Sources: ESRI, 2012; USGS 2012, NJDEP, 2012
Geographic Coordinate System: NAD_1983_StatePlane_New_Jersey_FIPS_2900_Feet
Datum: North American Datum of 1983 (NAD83)
Projection: Transverse Mercator
Linear Unit: Foot_US
Ellipsoid: Geodetic Reference System 80.



Oceanview 230 kV Transmission Line Reinforcement Project

Jersey Central Power & Light
January 15, 2014

Jersey Central Power & Light
A FirstEnergy Company



| | | |
|---------------------------|----------------------------------|--------------------------------------|
| Substation | Existing Transmission 230 kV | Existing Transmission ROW |
| Field Note | Existing Transmission 115/138 kV | Municipal Boundary |
| School | Existing Transmission < 115 kV | County Boundary |
| Pull Site/Lay Down Area | Distribution Line | Department of Defense |
| Access Road | Existing Tower | State Parks/State Conservation |
| Access Road Option | | Local/Private Conservation |
| Preferred Route | | Parcel boundaries displayed in white |
| Preferred Route (Rebuild) | | |

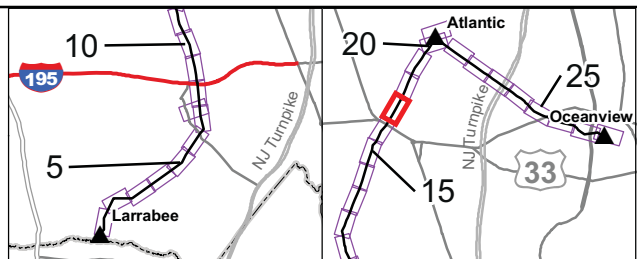
Tile 18 of 30



DRK-Exhibit 11R
Preliminary Access Roads

0 100 200 300 400 500 Feet

Data Sources: ESRI, 2012; USGS 2012, NJDEP, 2012
 Geographic Coordinate System: NAD_1983_StatePlane_New_Jersey_FIPS_2900_Feet
 Datum: North American Datum of 1983 (NAD83)
 Projection: Transverse Mercator
 Linear Unit: Foot_US
 Ellipsoid: Geodetic Reference System 80.



Oceanview 230 kV Transmission Line Reinforcement Project

Jersey Central Power & Light
 January 15, 2014

Jersey Central Power & Light
 A FirstEnergy Company



| | | | | | |
|--|---------------------------|--|------------|--|--------------------------------------|
| | Substation | | Field Note | | Existing Transmission ROW |
| | School | | Wetland | | Existing Transmission |
| | Pull Site/Lay Down Area | | Garden | | 230 kV |
| | Access Road | | Mat | | 115/138 kV |
| | Access Road Option | | | | < 115 kV |
| | Preferred Route | | | | Distribution Line |
| | Preferred Route (Rebuild) | | | | Existing Tower |
| | | | | | Parcel boundaries displayed in white |
| | | | | | Municipal Boundary |
| | | | | | County Boundary |
| | | | | | Department of Defense |
| | | | | | State Parks/State Conservation |
| | | | | | Local/Private Conservation |

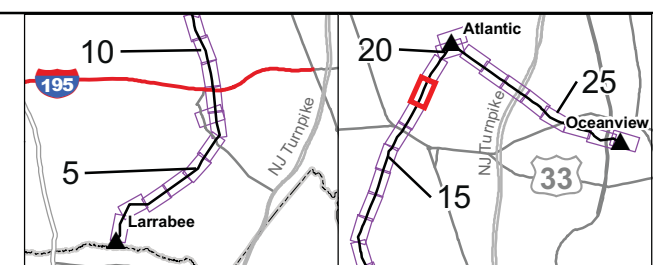
Tile 19 of 30



DRK-Exhibit 11S
Preliminary Access Roads

0 100 200 300 400 500 Feet

Data Sources: ESRI, 2012; USGS 2012, NJDEP, 2012
Geographic Coordinate System: NAD_1983_StatePlane_New_Jersey_FIPS_2900_Feet
Datum: North American Datum of 1983 (NAD83)
Projection: Transverse Mercator
Linear Unit: Foot_US
Ellipsoid: Geodetic Reference System 80.



Oceanview 230 kV Transmission Line Reinforcement Project

Jersey Central Power & Light
January 15, 2014

Jersey Central Power & Light
A FirstEnergy Company



| | | | | | |
|--|---------------------------|--|-----------------------|--|--------------------------------------|
| | Substation | | Existing Transmission | | Existing Transmission ROW |
| | Field Note | | 230 kV | | Municipal Boundary |
| | School | | 115/138 kV | | County Boundary |
| | Pull Site/Lay Down Area | | < 115 kV | | Department of Defense |
| | Access Road | | Distribution Line | | State Parks/State Conservation |
| | Access Road Option | | Existing Tower | | Local/Private Conservation |
| | Preferred Route | | | | Parcel boundaries displayed in white |
| | Preferred Route (Rebuild) | | | | |

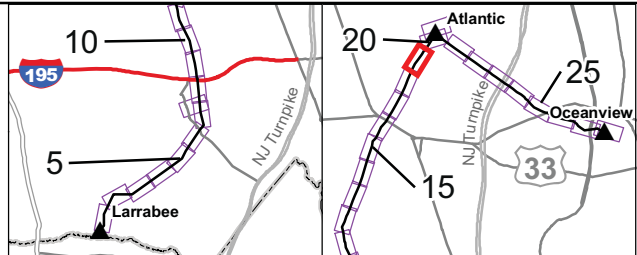
Tile 20 of 30



DRK-Exhibit 11T
Preliminary Access Roads

0 100 200 300 400 500 Feet

Data Sources: ESRI, 2012; USGS 2012, NJDEP, 2012
 Geographic Coordinate System: NAD_1983_StatePlane_New_Jersey_FIPS_2900_Feet
 Datum: North American Datum of 1983 (NAD83)
 Projection: Transverse Mercator
 Linear Unit: Foot_US
 Ellipsoid: Geodetic Reference System 80.



Oceanview 230 kV Transmission Line Reinforcement Project

Jersey Central Power & Light
 January 15, 2014

Jersey Central Power & Light
 A FirstEnergy Company



MONMOUTH COUNTY 16

Atlantic

Colts Neck Township
Tinton Falls Borough

| | | | |
|--|---------------------------|--------------------------------------|--------------------------------|
| | Substation | | Existing Transmission ROW |
| | Field Note | | Municipal Boundary |
| | School | | County Boundary |
| | Pull Site/Lay Down Area | | Department of Defense |
| | Access Road | | State Parks/State Conservation |
| | Access Road Option | | Local/Private Conservation |
| | Preferred Route | Parcel boundaries displayed in white | |
| | Preferred Route (Rebuild) | | |

Tile 21 of 30



DRK-Exhibit 11U
Preliminary Access Roads

0 100 200 300 400 500 Feet

Data Sources: ESRI, 2012; USGS 2012, NJDEP, 2012
Geographic Coordinate System: NAD_1983_StatePlane_New_Jersey_FIPS_2900_Feet
Datum: North American Datum of 1983 (NAD83)
Projection: Transverse Mercator
Linear Unit: Foot_US
Ellipsoid: Geodetic Reference System 80.



Oceanview 230 kV Transmission Line Reinforcement Project

Jersey Central Power & Light
January 15, 2014

Jersey Central Power & Light
A FirstEnergy Company



| | | | | | |
|--|---------------------------|--|------------------------------|--|--------------------------------------|
| | Substation | | Existing Transmission 230 kV | | Existing Transmission ROW |
| | Field Note | | 115/138 kV | | Municipal Boundary |
| | School | | < 115 kV | | County Boundary |
| | Pull Site/Lay Down Area | | Distribution Line | | Department of Defense |
| | Access Road | | Existing Tower | | State Parks/State Conservation |
| | Access Road Option | | | | Local/Private Conservation |
| | Preferred Route | | | | Parcel boundaries displayed in white |
| | Preferred Route (Rebuild) | | | | |

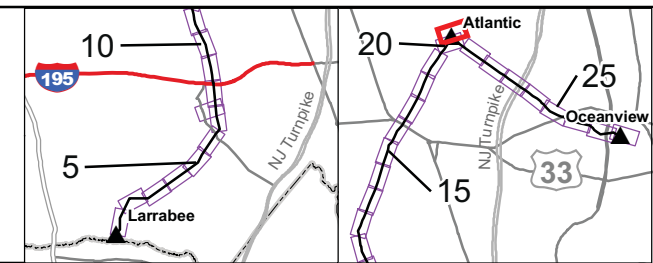
Tile 22 of 30



DRK-Exhibit 11V
Preliminary Access Roads

0 100 200 300 400 500 Feet

Data Sources: ESRI, 2012; USGS 2012, NJDEP, 2012
 Geographic Coordinate System: NAD_1983_StatePlane_New_Jersey_FIPS_2900_Feet
 Datum: North American Datum of 1983 (NAD83)
 Projection: Transverse Mercator
 Linear Unit: Foot_US
 Ellipsoid: Geodetic Reference System 80.



Oceanview 230 kV Transmission Line Reinforcement Project

Jersey Central Power & Light
 January 15, 2014

Jersey Central Power & Light
 A FirstEnergy Company



| | | | | | |
|--|---------------------------|--------------------|-----------------------|--|--------------------------------------|
| | Substation | | Existing Transmission | | Existing Transmission ROW |
| | Field Note | | 230 kV | | Municipal Boundary |
| | School | | 115/138 kV | | County Boundary |
| | Pull Site/Lay Down Area | < 115 kV symbol"/> | < 115 kV | | Department of Defense |
| | Access Road | | Distribution Line | | State Parks/State Conservation |
| | Access Road Option | | Existing Tower | | Local/Private Conservation |
| | Preferred Route | | | | Parcel boundaries displayed in white |
| | Preferred Route (Rebuild) | | | | |

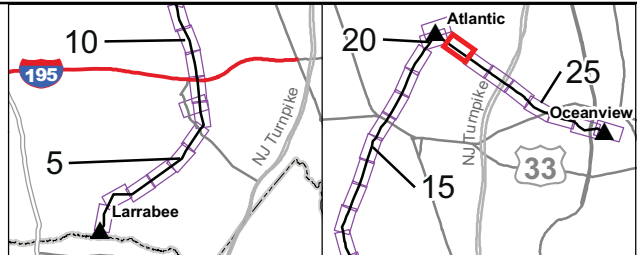
Tile 23 of 30



DRK-Exhibit 11W
Preliminary Access Roads

0 100 200 300 400 500 Feet

Data Sources: ESRI, 2012; USGS 2012, NJDEP, 2012
 Geographic Coordinate System: NAD_1983_StatePlane_New_Jersey_FIPS_2900_Feet
 Datum: North American Datum of 1983 (NAD83)
 Projection: Transverse Mercator
 Linear Unit: Foot_US
 Ellipsoid: Geodetic Reference System 80.



Oceanview 230 kV Transmission Line Reinforcement Project

Jersey Central Power & Light
 January 15, 2014

Jersey Central Power & Light
 A FirstEnergy Company



| | | | |
|--|----------------------------------|--|--------------------------------------|
| | Substation | | Existing Transmission ROW |
| | Field Note | | Municipal Boundary |
| | School | | County Boundary |
| | Pull Site/Lay Down Area | | Department of Defense |
| | Access Road | | State Parks/State Conservation |
| | Access Road Option | | Local/Private Conservation |
| | Preferred Route | | Parcel boundaries displayed in white |
| | Preferred Route (Rebuild) | | |
| | Existing Transmission 230 kV | | |
| | Existing Transmission 115/138 kV | | |
| | Existing Transmission < 115 kV | | |
| | Distribution Line | | |
| | Existing Tower | | |

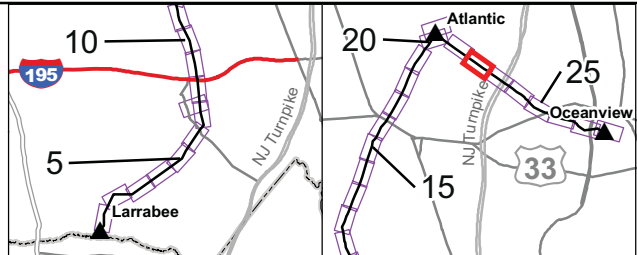
Tile 24 of 30



DRK-Exhibit 11X
Preliminary Access Roads

0 100 200 300 400 500 Feet

Data Sources: ESRI, 2012; USGS 2012, NJDEP, 2012
 Geographic Coordinate System: NAD_1983_StatePlane_New_Jersey_FIPS_2900_Feet
 Datum: North American Datum of 1983 (NAD83)
 Projection: Transverse Mercator
 Linear Unit: Foot_US
 Ellipsoid: Geodetic Reference System 80.



Oceanview 230 kV Transmission Line Reinforcement Project

Jersey Central Power & Light
 January 15, 2014

Jersey Central Power & Light
 A FirstEnergy Company



| | | | |
|--|---------------------------|--|--------------------------------------|
| | Substation | | Existing Transmission ROW |
| | Field Note | | 230 kV |
| | School | | 115/138 kV |
| | Pull Site/Lay Down Area | | < 115 kV |
| | Access Road | | Distribution Line |
| | Access Road Option | | Existing Tower |
| | Preferred Route | | Municipal Boundary |
| | Preferred Route (Rebuild) | | County Boundary |
| | | | Department of Defense |
| | | | State Parks/State Conservation |
| | | | Local/Private Conservation |
| | | | Parcel boundaries displayed in white |

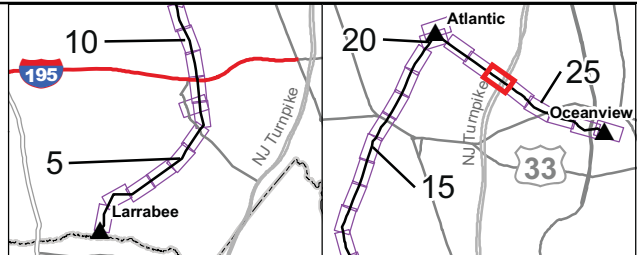
Tile 25 of 30



DRK-Exhibit 11Y
Preliminary Access Roads

0 100 200 300 400 500 Feet

Data Sources: ESRI, 2012; USGS 2012, NJDEP, 2012
Geographic Coordinate System: NAD_1983_StatePlane_New_Jersey_FIPS_2900_Feet
Datum: North American Datum of 1983 (NAD83)
Projection: Transverse Mercator
Linear Unit: Foot_US
Ellipsoid: Geodetic Reference System 80.



Oceanview 230 kV Transmission Line Reinforcement Project

Jersey Central Power & Light
January 15, 2014

Jersey Central Power & Light
A FirstEnergy Company



Childrens Center of Monmouth County School

- | | | |
|-----------------------------|-----------------------|--|
| ▲ Substation | Existing Transmission | Existing Transmission ROW |
| 📍 Field Note | ● 230 kV | ▭ Municipal Boundary |
| 🏫 School | ● 115/138 kV | ▭ County Boundary |
| ▭ Pull Site/Lay Down Area | ● < 115 kV | ▭ Department of Defense |
| ⋯ Access Road | ⋯ Distribution Line | ▭ State Parks/State Conservation |
| ⋯ Access Road Option | ● Existing Tower | ▭ Local/Private Conservation |
| ▬ Preferred Route | | ▭ Parcel boundaries displayed in white |
| ▬ Preferred Route (Rebuild) | | |

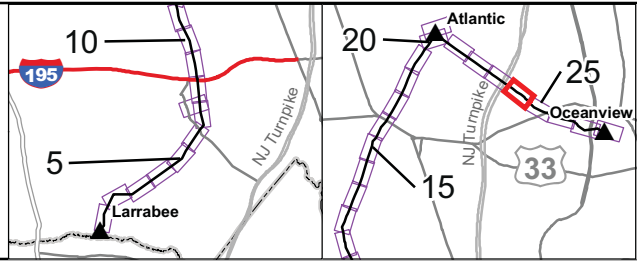
Tile 26 of 30



DRK-Exhibit 11Z
Preliminary Access Roads

0 100 200 300 400 500 Feet

Data Sources: ESRI, 2012; USGS 2012, NJDEP, 2012
Geographic Coordinate System: NAD_1983_StatePlane_New_Jersey_FIPS_2900_Feet
Datum: North American Datum of 1983 (NAD83)
Projection: Transverse Mercator
Linear Unit: Foot_US
Ellipsoid: Geodetic Reference System 80.



Oceanview 230 kV Transmission Line Reinforcement Project

Jersey Central Power & Light
January 15, 2014

Jersey Central Power & Light
A FirstEnergy Company



| | | | |
|--|----------------------------------|--|--------------------------------------|
| | Substation | | Existing Transmission ROW |
| | Field Note | | Municipal Boundary |
| | School | | County Boundary |
| | Pull Site/Lay Down Area | | Department of Defense |
| | Access Road | | State Parks/State Conservation |
| | Access Road Option | | Local/Private Conservation |
| | Preferred Route | | Parcel boundaries displayed in white |
| | Preferred Route (Rebuild) | | |
| | Existing Transmission 230 kV | | |
| | Existing Transmission 115/138 kV | | |
| | Existing Transmission < 115 kV | | |
| | Distribution Line | | |
| | Existing Tower | | |

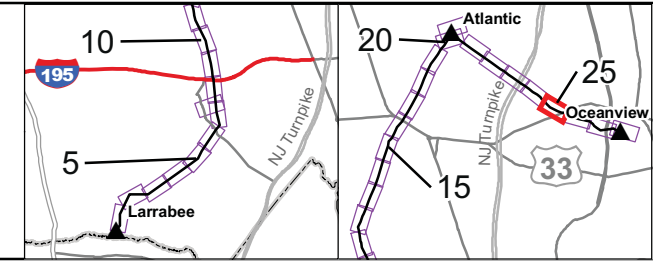
Tile 27 of 30



DRK-Exhibit 11AA
Preliminary Access Roads

0 100 200 300 400 500 Feet

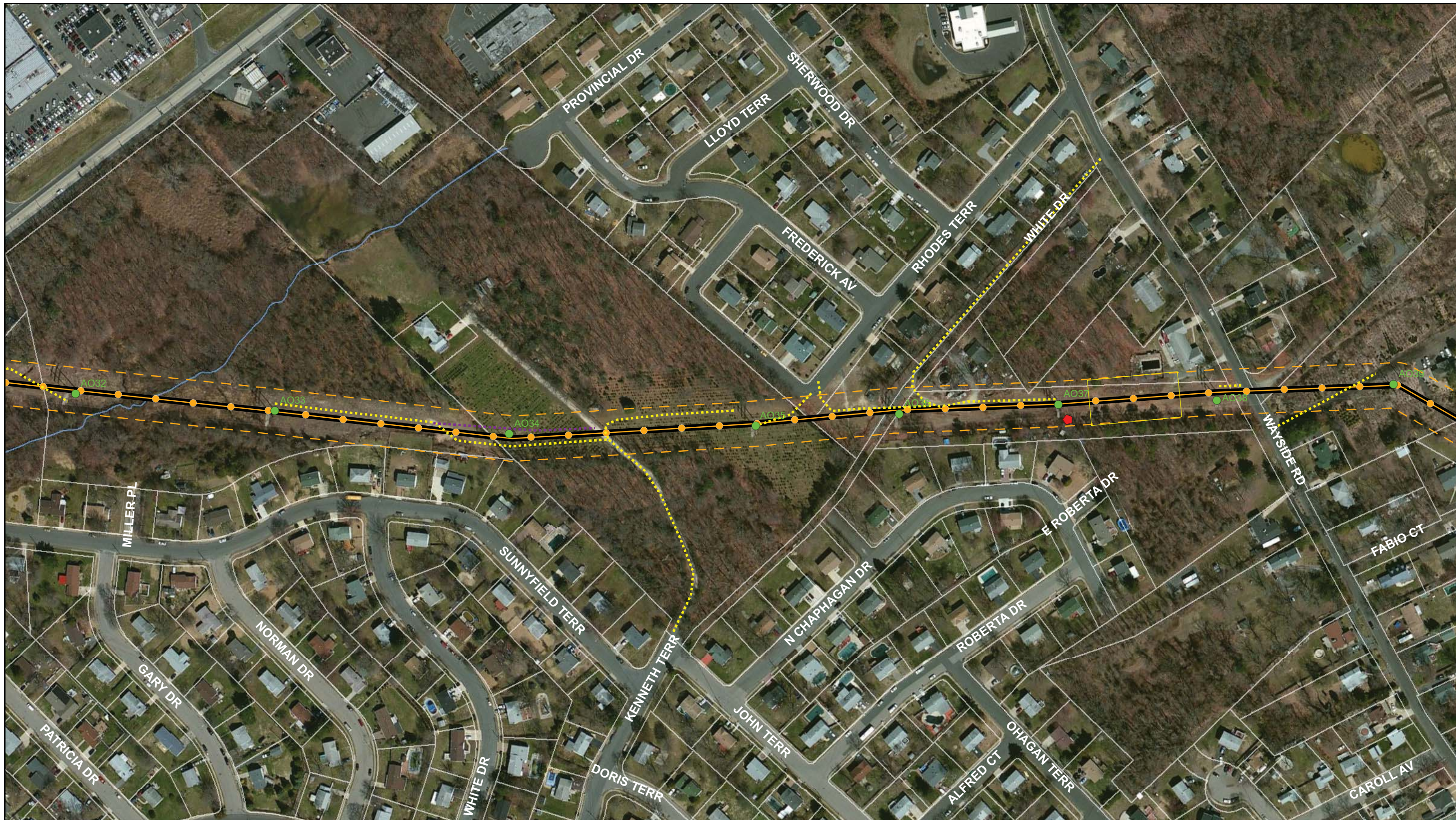
Data Sources: ESRI, 2012; USGS 2012, NJDEP, 2012
Geographic Coordinate System: NAD_1983_StatePlane_New_Jersey_FIPS_2900_Feet
Datum: North American Datum of 1983 (NAD83)
Projection: Transverse Mercator
Linear Unit: Foot_US
Ellipsoid: Geodetic Reference System 80.



Oceanview 230 kV Transmission Line Reinforcement Project

Jersey Central Power & Light
January 15, 2014

Jersey Central Power & Light
A FirstEnergy Company



| | | | |
|--|----------------------------------|--|--------------------------------------|
| | Substation | | Existing Transmission ROW |
| | Field Note | | Municipal Boundary |
| | School | | County Boundary |
| | Pull Site/Lay Down Area | | Department of Defense |
| | Access Road | | State Parks/State Conservation |
| | Access Road Option | | Local/Private Conservation |
| | Preferred Route | | Parcel boundaries displayed in white |
| | Preferred Route (Rebuild) | | |
| | Existing Transmission 230 kV | | |
| | Existing Transmission 115/138 kV | | |
| | Existing Transmission < 115 kV | | |
| | Distribution Line | | |
| | Existing Tower | | |

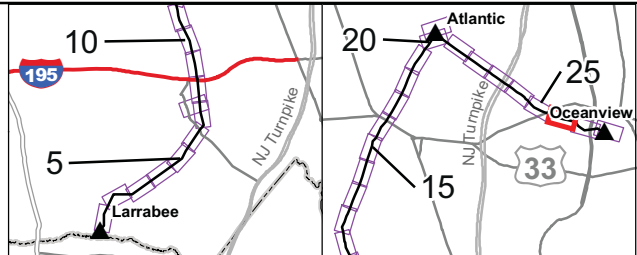
Tile 28 of 30



DRK-Exhibit 11AB
Preliminary Access Roads

0 100 200 300 400 500 Feet

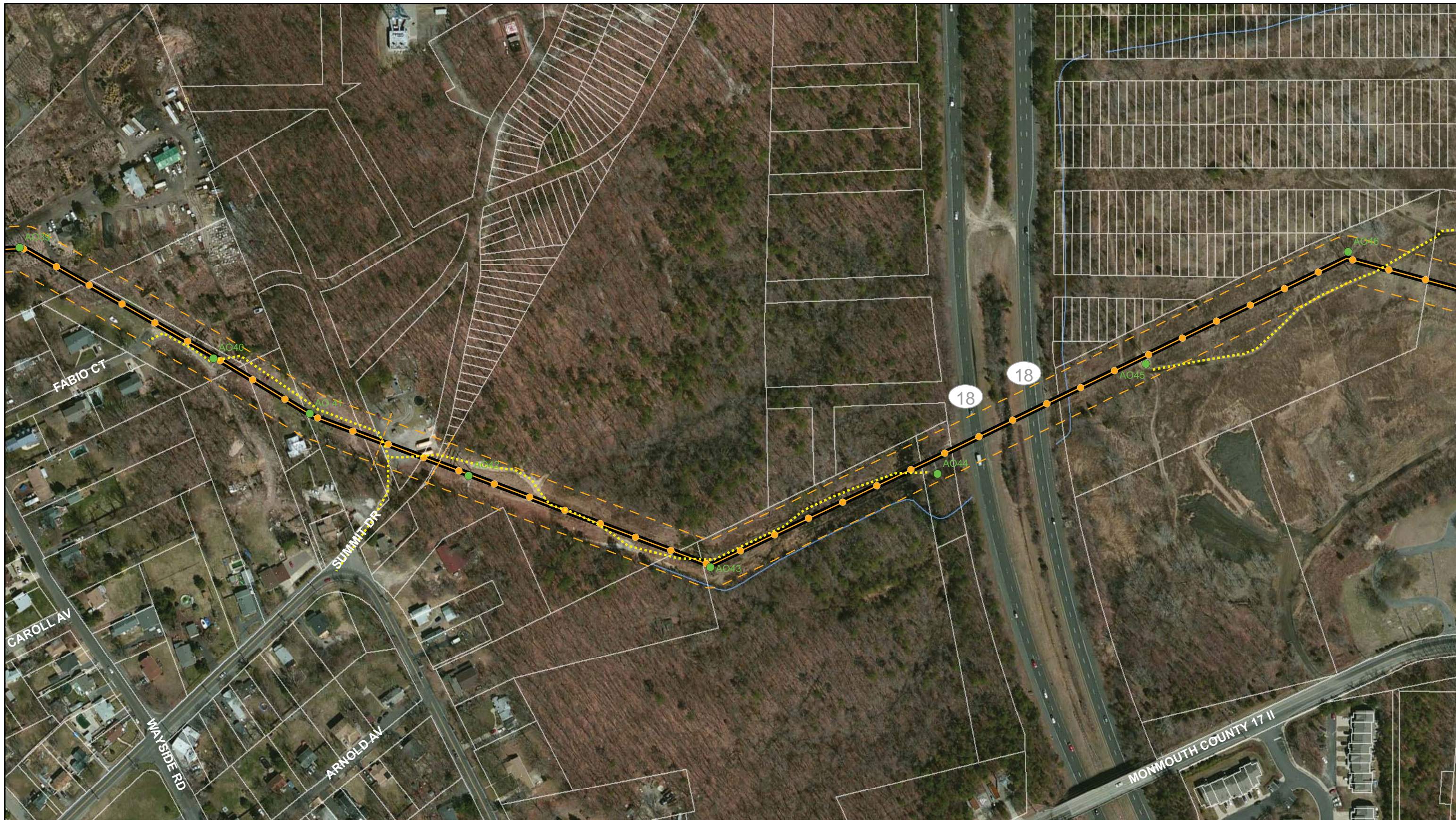
Data Sources: ESRI, 2012; USGS 2012, NJDEP, 2012
 Geographic Coordinate System: NAD_1983_StatePlane_New_Jersey_FIPS_2900_Feet
 Datum: North American Datum of 1983 (NAD83)
 Projection: Transverse Mercator
 Linear Unit: Foot_US
 Ellipsoid: Geodetic Reference System 80.



Oceanview 230 kV Transmission Line Reinforcement Project

Jersey Central Power & Light
 January 15, 2014

Jersey Central Power & Light
 A FirstEnergy Company

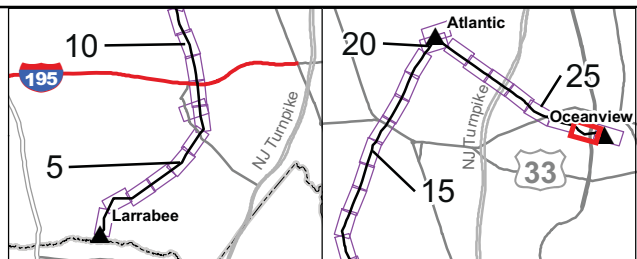


| | | | |
|--|----------------------------------|--|--------------------------------------|
| | Substation | | Existing Transmission ROW |
| | Field Note | | Municipal Boundary |
| | School | | County Boundary |
| | Pull Site/Lay Down Area | | Department of Defense |
| | Access Road | | State Parks/State Conservation |
| | Access Road Option | | Local/Private Conservation |
| | Preferred Route | | Parcel boundaries displayed in white |
| | Preferred Route (Rebuild) | | |
| | Existing Transmission 230 kV | | |
| | Existing Transmission 115/138 kV | | |
| | Existing Transmission < 115 kV | | |
| | Distribution Line | | |
| | Existing Tower | | |

Tile 29 of 30

DRK-Exhibit 11AC
Preliminary Access Roads

Data Sources: ESRI, 2012; USGS 2012, NJDEP, 2012
Geographic Coordinate System: NAD_1983_StatePlane_New_Jersey_FIPS_2900_Feet
Datum: North American Datum of 1983 (NAD83)
Projection: Transverse Mercator
Linear Unit: Foot_US
Ellipsoid: Geodetic Reference System 80.



Oceanview 230 kV Transmission Line Reinforcement Project

Jersey Central Power & Light
January 15, 2014

A FirstEnergy Company



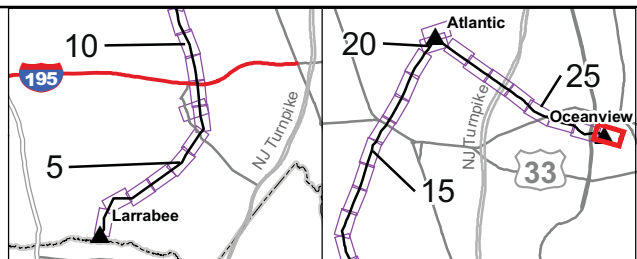


| | | | |
|--|---------------------------|--------------------------------------|--------------------------------|
| | Substation | | Existing Transmission ROW |
| | Field Note | | Municipal Boundary |
| | School | | County Boundary |
| | Pull Site/Lay Down Area | | Department of Defense |
| | Access Road | | State Parks/State Conservation |
| | Access Road Option | | Local/Private Conservation |
| | Preferred Route | Parcel boundaries displayed in white | |
| | Preferred Route (Rebuild) | | |

Tile 30 of 30

DRK-Exhibit 11AD
Preliminary Access Roads

Data Sources: ESRI, 2012; USGS 2012, NJDEP, 2012
Geographic Coordinate System: NAD_1983_StatePlane_New_Jersey_FIPS_2900_Feet
Datum: North American Datum of 1983 (NAD83)
Projection: Transverse Mercator
Linear Unit: Foot_US
Ellipsoid: Geodetic Reference System 80.



Oceanview 230 kV Transmission Line Reinforcement Project

Jersey Central Power & Light
January 15, 2014

A FirstEnergy Company