



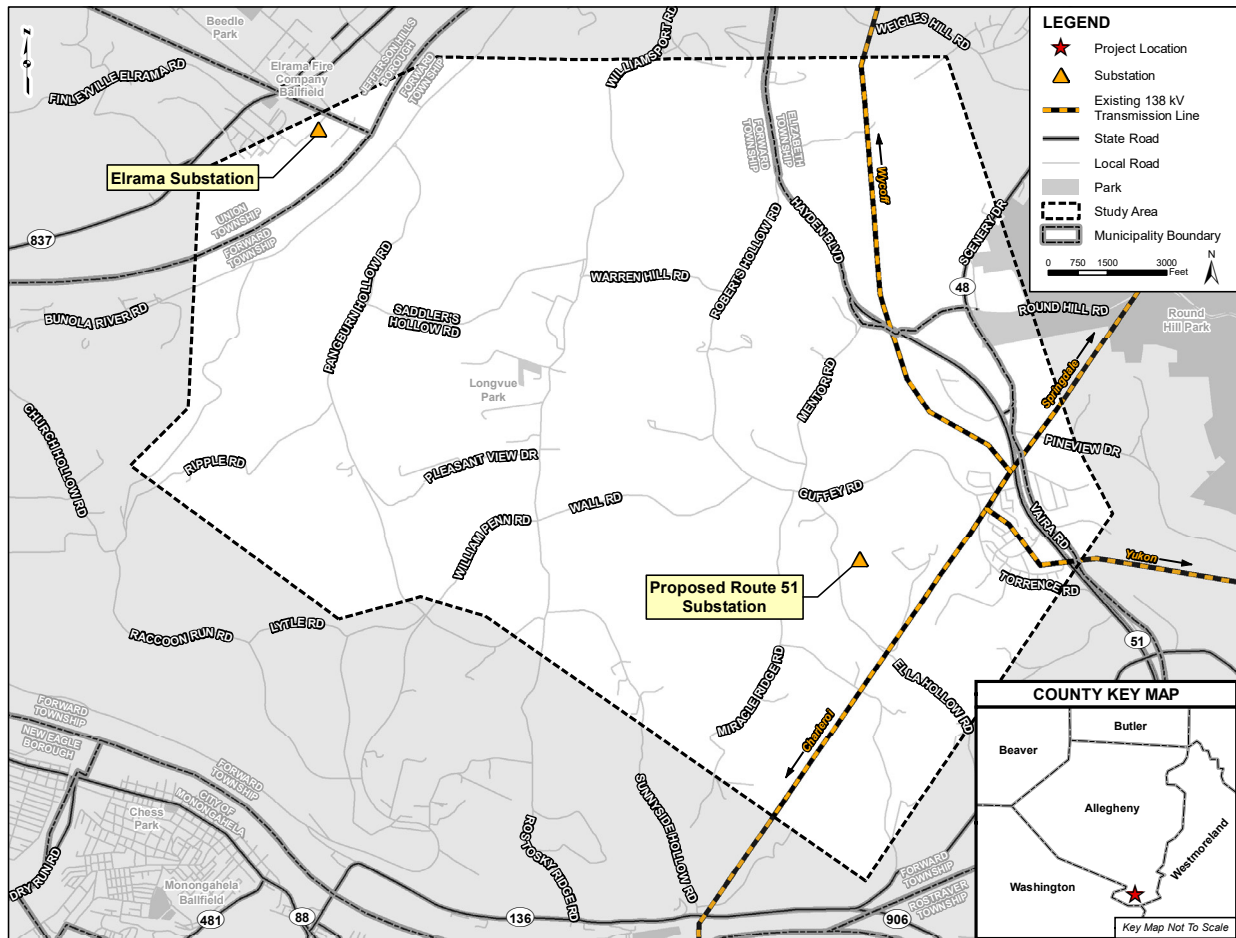
ROUTE 51 TRANSMISSION SUBSTATION AND TRANSMISSION REINFORCEMENT PROJECT

At FirstEnergy, it's our responsibility to deliver the power our customers depend on in their daily lives. Several generation plants in Pennsylvania and surrounding areas have announced plans to deactivate by 2021. To ensure continued grid reliability after those units shut down, West Penn Power, a FirstEnergy utility, must modify its transmission system.

PROJECT OVERVIEW

West Penn Power will reinforce the regional transmission network by building a new 138-kilovolt (kV) Route 51 Substation in Forward Township, Allegheny County, Pennsylvania. Four existing transmission lines will be connected with the substation. A second key component of the project will be two new 138-kV transmission lines that will connect the Route 51 Substation to a substation that Duquesne Light Company plans to build at its former Elrama power plant, about 4.5 miles to the northwest in Union Township, Washington County.

Continued



TRANSMISSION LINE SITING AND APPROVALS

PJM, the Regional Transmission System Operator, has already approved the proposed Route 51 project. More information about the project can be found on PJM's webpage, www.pjm.com, under project numbers PJM RTEP b3011.1 and PJM RTEP b3012.

In addition, West Penn Power will seek approval from the Pennsylvania Public Utility Commission (PaPUC) for the project.

A detailed routing study is underway to identify potential line routes. These routes are being carefully evaluated to avoid environmentally sensitive areas and minimize impacts to landowners and the community. The routes under consideration are within the study zone shown on the map.

EASEMENTS

West Penn Power will negotiate with property owners to obtain the necessary agreements for right-of-way easements and vegetation management rights to support the new transmission lines. The new lines will be suspended on steel pole structures. As proposed, the new single-circuit 138-kV transmission lines connecting the Route 51 and Elrama substations will run side-by-side on separate pole lines within a common corridor, approximately 170 feet wide in most places. Several short extensions running from the existing transmission lines to the new Route 51 Substation also will be placed on new single steel poles in 170-foot corridors.

PERMITTING

Detailed wetland, stream and other environmental and cultural resource evaluations will be performed along the proposed transmission line routes, and necessary permits will be secured from local, state and federal agencies before construction.

CONSTRUCTION

Construction of the Route 51 Substation and associated transmission lines is scheduled to begin in Spring 2020, with construction of the two lines between the Route 51 and Elrama substations planned to begin in Fall 2020. The new facilities must be in service by June 1, 2021, in time for the planned power plant deactivations.

PRELIMINARY PROJECT TIMELINE

April 30, 2019 ... Public Open House, Elizabeth, PA
Spring 2019 Start Real Estate Negotiations
Spring 2020 Start Construction Route 51 Substation/Loop Lines
Fall 2020 Start Construction Route 51 to Elrama Lines
Summer 2021.... Facilities completed and in service

ABOUT *ENERGIZING THE FUTURE*

Through *Energizing the Future*, FirstEnergy is upgrading and strengthening the transmission grid to meet the existing and future needs of our customers and communities. Projects are focused on upgrading or replacing aging equipment to harden our transmission infrastructure, reduce outages and cut maintenance costs; enhancing performance by building a smarter, more secure transmission system; and adding flexibility by building in redundancy and allowing system operators to more swiftly react to changing grid conditions.

For more information and project updates, visit firstenergycorp.com/about/transmission_projects/pennsylvania

