

**BEFORE THE
PENNSYLVANIA PUBLIC UTILITY COMMISSION**

**APPLICATION OF MID-ATLANTIC :
INTERSTATE TRANSMISSION, LLC :
FILED PURSUANT TO 52 PA. CODE : Docket No. A-2021-_____**
**CHAPTER 57, SUBCHAPTER G, FOR :
APPROVAL OF THE SITING AND :
CONSTRUCTION OF THE :
HUNTERSTOWN-ORRTANNA 115 KV :
TRANSMISSION LINE PROJECT :
LOCATED IN HIGHLAND, FRANKLIN, :
BUTLER, CUMBERLAND AND STRABAN :
TOWNSHIPS IN ADAMS COUNTY, :
PENNSYLVANIA :**

NOTICE OF FILING

An Application will be filed with the Pennsylvania Public Utility Commission (“Commission”) on or about April 22, 2021, pursuant to the Commission’s or regulations at 52 Pa. Code § 57.72 *et seq.* and its Interim Guidelines for the Filing of Electric Transmission Line Siting Applications at 52 Pa. Code § 69.3101 *et seq.* The purpose of the Application is to seek Commission review and approval required to locate, construct, operate and maintain a high-voltage (“HV”) transmission line referred to as the “Hunterstown-Orrtanna 115 kV Transmission Line Project” (hereinafter, the “Project”). The proposed new 9.1-mile, double circuit, steel overhead 115 kilovolt (“kV”) transmission line is located in Highland, Franklin, Butler, Cumberland and Straban Townships in Adams County, Pennsylvania. Pursuant to 52 Pa. Code § 57.74(c), you are receiving this Notice because you are the specified official of a relevant agency, or because you are the record owner of property within the proposed right-of-way for the Project. You are not required to appear or participate in this matter, but you may request Commission permission to intervene.

OVERVIEW OF THE PROJECT

Mid-Atlantic Interstate Transmission, LLC (“MAIT” or the “Company”) has completed an evaluation of the existing 115 kV transmission system linking the Orrtanna Substation in Highland Township and Hunterstown Substation in Straban Township, which are both located in the service area of Metropolitan Edison Company (“Met-Ed”), and determined the Project is necessary to address the existing condition of the Hunterstown-Lincoln-Orrtanna 115 kV Transmission Line and to improve reliability and enhance service for customers by networking a radial load that presently cannot be transferred to other substations. A majority of the conductor, hardware and structures for this line were installed in the 1960s.

As such, MAIT proposes to construct a new double circuit 115 kV transmission line parallel to an existing single circuit 115 kV line within an existing transmission corridor. Upon completion of the Project, the existing single circuit 115 kV line within the corridor will be removed as the proposed double circuit construction will accommodate both the existing and proposed circuit.

The entire Project will be located in Adams County, Pennsylvania. Approximations of the proposed Hunterstown-Orrtanna 115 kV Transmission Line’s situation in each municipality touched are as follows: 1.7 miles will be located within Highland Township, 3.4 miles will be located within Franklin Township, 0.8 mile will be located within Butler Township, 1.4 miles will be located within Cumberland Township, and 1.8 miles will be located within Straban Township.

9.8. The proposed Project involves the construction of a new double circuit 115 kV line from the Orrtanna 115 kV substation approximately 9.1 miles to existing structure location #223 located 1 span east of the existing switch. This existing wood structure will be replaced with a 3-pole dead end wood structure to accommodate the tie-in. Upon completion of the tie-in, the existing 6-

pole switch structure and conductor between the tap location and structure #223 will be removed, eliminating the radial configuration and creating the two separate circuits. Upon Commission approval, construction is scheduled to commence on or about July 15, 2022 to meet a required in-service date of May 15, 2023.

ROUTE FOR THE PROJECT

The Project, as proposed, will utilize 100 feet of existing 200-foot ROW corridor. MAIT conducted an extensive, multi-faceted analysis to determine the preferred route for the Project. The goal of MAIT's siting analysis for the proposed Project was to determine the most suitable route to interconnect the proposed transmission line with the existing system, which best balances social, environmental, engineering and economic considerations.

The Proposed Route is approximately 9.1 miles in length and parallels the north side of the existing Hunterstown-Lincoln-Orrtanna 115 kV Transmission Line from the Orrtanna Substation to the switch pole structure in an existing 200-foot wide ROW. From the Orrtanna Substation, the Proposed Route would extend northeast for 2.7 miles across predominantly agricultural lands to U.S. Route 30. This alignment would cross Little Marsh Creek and several smaller tributaries. Road crossings would include Railroad Lane and Seven Stars Road, which are bordered by low density residential development. The CSX Railroad would also be spanned in this section. After crossing U.S. Route 30, the route would continue for 1.9 miles to the northeast to a field located north of Mummasburg Road and adjacent to the south side of the Hunterstown-Conemaugh 500 kV Transmission Line. Land use in this section is predominantly agriculture with few homes noted at the road crossings. Marsh Creek and Mummasburg Run are spanned along this section. Turning east, the Proposed Route would extend for 0.9 mile, spanning residential bordered Belmont Road and paralleling the south side of the Hunterstown-Conemaugh 500 kV Transmission Line, to a turn

point located adjacent to Russel Tavern Road. At this point, the route would turn southeast and extend for 0.9 mile to SR 34, spanning Russel Tavern Road, Willoughby Run, the Gettysburg and Northern Railroad, and Herra Ridge Road before intersecting with SR 34. Land use changes from agriculture to moderately dense residential and commercial development adjacent to SR 34. Turning east, the alignment would extend for 1.5 miles across predominantly agricultural lands to Good Intent Road, with residential development and a local school noted near the SR 34 crossing and a commercial business noted adjacent to Table Rock Road. The Hunterstown-Conemaugh 500 kV Transmission Line and two tributaries to Rock Creek would be spanned in this section. The Proposed Route would then turn southeast for 1.2 miles and extend across agricultural lands to the switch pole structure. Rock Creek and Business Route 15 (Old Harrisburg Road) would be spanned along this section. Light residential development is located near the Business Route 15 (Old Harrisburg Road) crossing.

MAP

Enclosed are maps showing the route for the Project across all affected properties.

EXAMINATION

As described in the Application, MAIT has requested a waiver of Section 57.74(d) of the Commission's regulations, 52 Pa. Code § 57.74(d), which requires that MAIT "shall make a copy of the application available for public examination during ordinary business hours at a convenient location within a county in which any part of the proposed HV line will be located." Due to the ongoing COVID-19 pandemic, MAIT's physical office locations in Adams County are not generally open to its employees or the public. As such, MAIT has requested a waiver of this requirement and has made available a copy of the Application for public examination online at the following link:

https://firstenergycorp.com/content/fecorp/about/transmission_projects/pennsylvania/hunterstown-ortanna.html.

PARTICIPATION

You are not required to appear or participate in this matter, but you may request Commission permission to intervene. To intervene as a formal party to this proceeding, you should file a petition to intervene with the Secretary of the Pennsylvania Public Utility Commission at P.O. Box 3265 Harrisburg, Pennsylvania 17105-3265. The petition to intervene should state your alleged right or interest to participate in the formal proceeding, the grounds of the proposed intervention, and your position regarding the issues in the formal proceeding. A copy of the petition to intervene should be served on the undersigned counsel for MAIT.

In the event you have any questions concerning the proposed Project but do not wish to participate as a formal party to the proceeding, you should contact either Mary E. Anderson, Transmission Specialist III, at 888-311-4737 or Transmissionprojects@firstenergycorp.com, or Tori L. Giesler, legal counsel for MAIT, at 610-921-6658.

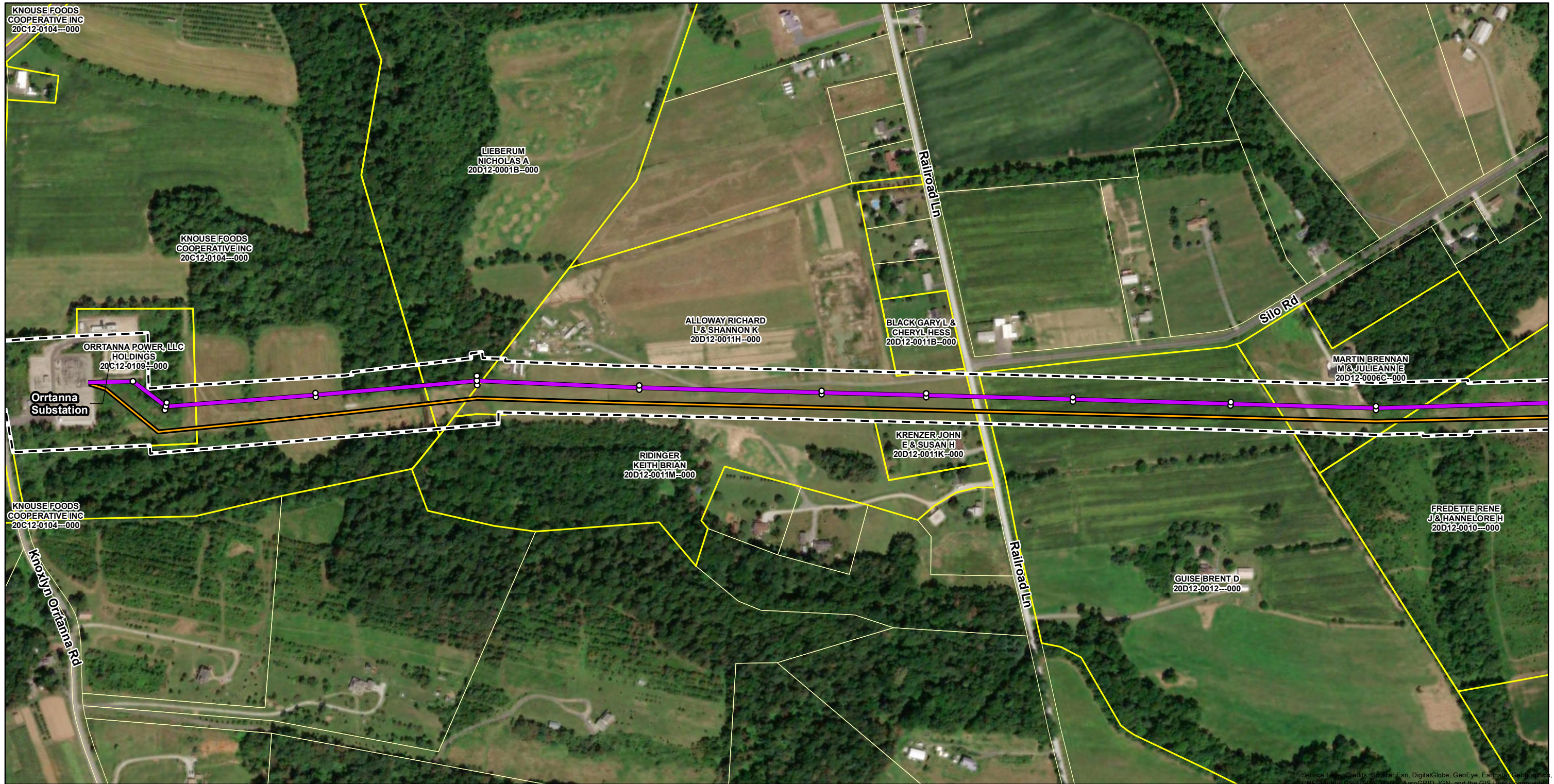
Dated: April 22, 2021

By: 

Tori L. Giesler
Attorney No. 207742
2800 Pottsville Pike
P.O. Box 16001
Reading, PA 19612-6001
(610) 921-6658
tgiesler@firstenergycorp.com

David B. MacGregor
Attorney No. 28804
Post & Schell, P.C.
Four Penn Center
1600 John F. Kennedy Blvd.
Philadelphia, PA 19103-2808
(215) 587-1197
dmacgregor@postschell.com

Anthony D. Kanagy
Attorney No. 85522
Garrett P. Lent
Attorney No. 321566
Post & Schell, P.C.
17 North Second Street
12th Floor
Harrisburg, PA 17101-1601
(717) 612-6034
akanagy@postschell.com
(717) 612-6032
glent@postschell.com



Source: Esri, DeLorme, GeoEye, DigitalGlobe, GeoEye, Earthstar (GlobalVista), Swire, GEBCO, USGS, AeroGRID, IGN, and the GIS User Community

Legend

- Proposed Structures
- Proposed Hunterstown-Orrtanna 115 kV Transmission Line
- Existing 115 kV Transmission Lines
- - - Existing Transmission Line Right of Way (ROW)
- ▭ Properties Crossed by ROW
- ▭ Parcel Boundary

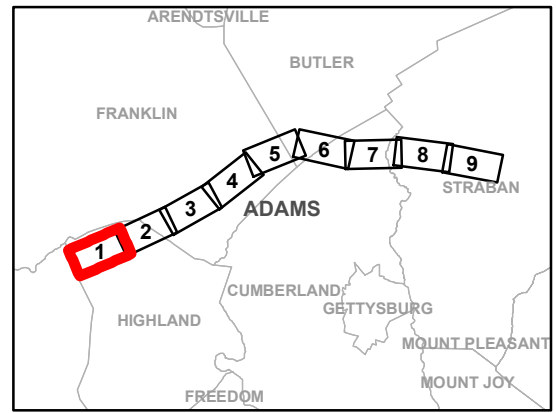
Notes

1. Existing transmission line alignments provided by PowerMap.

NAD 1983 State Plane
 Pennsylvania South FIPS 3702
 Projection: Lambert Conformal Conic
 Linear Unit: US Foot

References:
 Existing Transmission Network (PowerMap)
 Existing Orrtanna 115 kV Line (FirstEnergy)
 Existing ROW (FirstEnergy)
 World Imagery Basemap (ESRI)
 Parcel Lines (Adams County)

0 200 400 800
 Feet
 1 inch = 400 feet



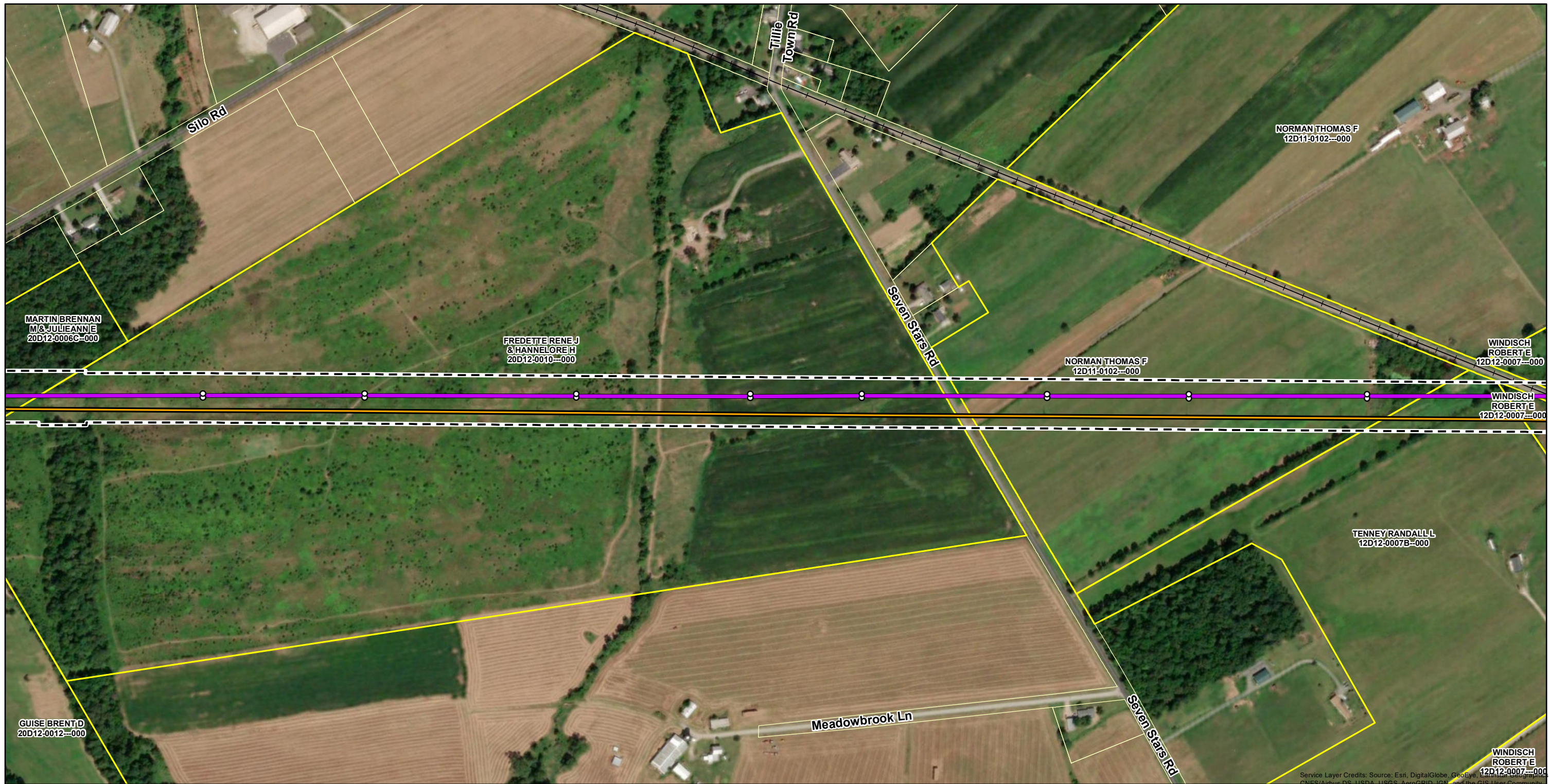
AECOM

EXHIBIT 14
Aerial Overview Map

Hunterstown-Orrtanna 115 kV
 Transmission Line Project

Page 1 of 9
 Adams County, Pennsylvania
 FirstEnergy Corporation: Akron, Ohio

Prepared By: DJYNAB	Checked By: BAB
Job: Orrtanna	Date: 10/23/2019



Service Layer Credits: Source: Esri, DigitalGlobe, GeoEye, Earthstar Geographics, CNES/Airbus DS, USDA, USGS, AeroGRID, IGN, and the GIS User Community

Legend

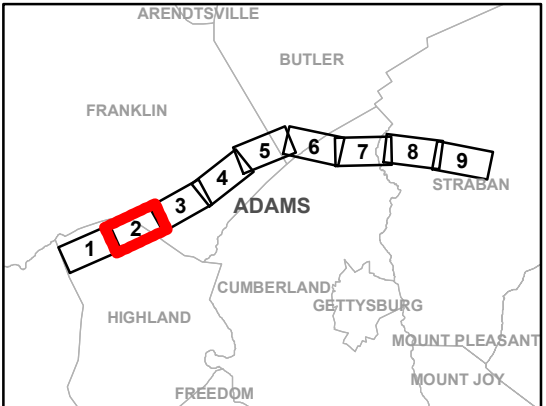
- Proposed Structures
- Proposed Hunterstown-Orrtanna 115 kV Transmission Line
- Existing 115 kV Transmission Lines
- Existing Transmission Line Right of Way (ROW)
- Properties Crossed by ROW
- Parcel Boundary

Notes

- Existing transmission line alignments provided by PowerMap.

NAD 1983 State Plane
 Pennsylvania South FIPS 3702
 Projection: Lambert Conformal Conic
 Linear Unit: US Foot

References:
 Existing Transmission Network (PowerMap)
 Existing Orrtanna 115 kV Line (FirstEnergy)
 Existing ROW (FirstEnergy)
 World Imagery Basemap (ESRI)
 Parcel Lines (Adams County)



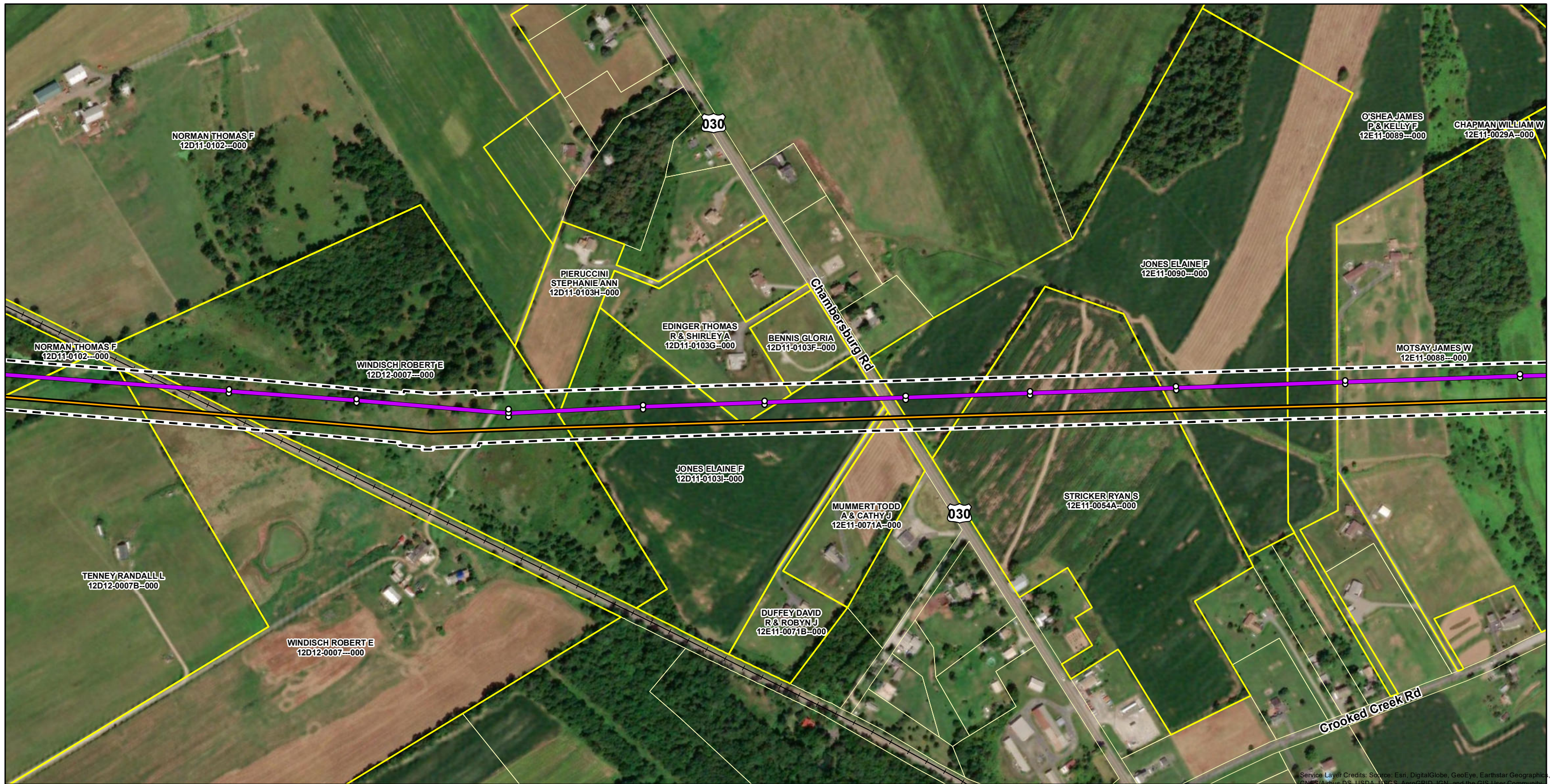
AECOM

EXHIBIT 14
Aerial Overview Map

Hunterstown-Orrtanna 115 kV
 Transmission Line Project

Page 2 of 9
 Adams County, Pennsylvania
 FirstEnergy Corporation: Akron, Ohio

Prepared By: DJYNAB	Checked By: BAB
Job: Orrtanna	Date: 10/23/2019



Service Layer Credits: Source: Esri, DigitalGlobe, GeoEye, Earthstar Geographics, CNES/Airbus DS, USDA, USGS, AeroGRID, IGN, and the GIS User Community

Legend

- Proposed Structures
- Proposed Hunterstown-Orrtanna 115 kV Transmission Line
- Existing 115 kV Transmission Lines
- Existing Transmission Line Right of Way (ROW)
- Properties Crossed by ROW
- Parcel Boundary

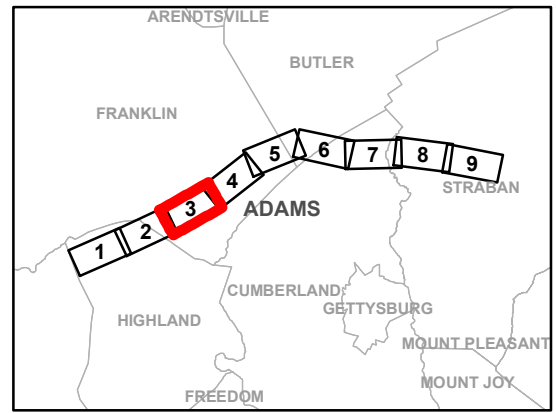
Notes

- Existing transmission line alignments provided by PowerMap.

NAD 1983 State Plane
 Pennsylvania South FIPS 3702
 Projection: Lambert Conformal Conic
 Linear Unit: US Foot

References:
 Existing Transmission Network (PowerMap)
 Existing Orrtanna 115 kV Line (FirstEnergy)
 Existing ROW (FirstEnergy)
 World Imagery Basemap (ESRI)
 Parcel Lines (Adams County)

0 200 400 800
 Feet
 1 inch = 400 feet



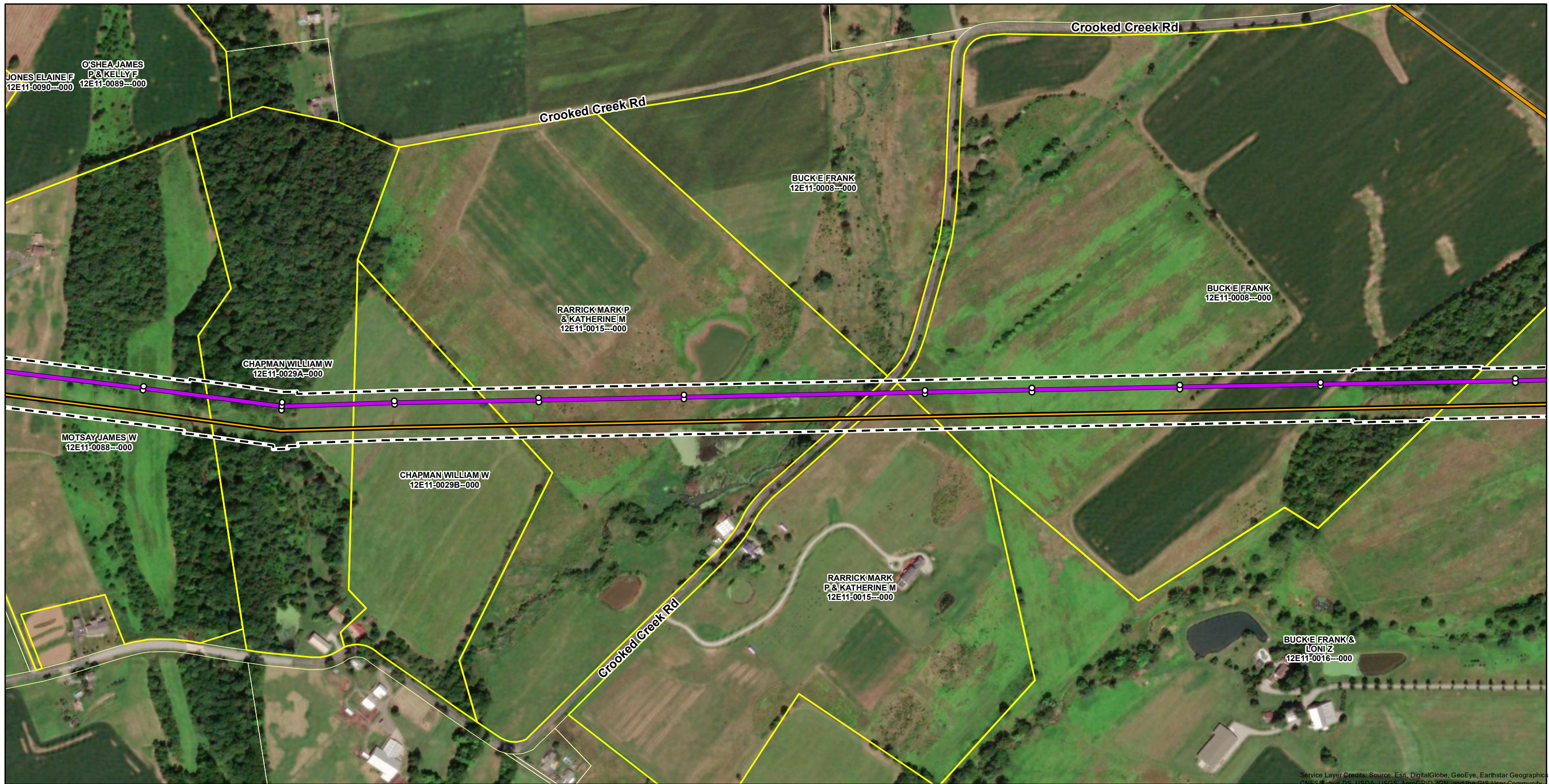
AECOM

EXHIBIT 14
Aerial Overview Map

Hunterstown-Orrtanna 115 kV
 Transmission Line Project

Page 3 of 9
 Adams County, Pennsylvania
 FirstEnergy Corporation: Akron, Ohio

Prepared By: DJYNAB	Checked By: BAB
Job: Orrtanna	Date: 10/23/2019



Service Layer Credits: Source: Esri, DigitalGlobe, GeoEye, Earthstar Geographics, CNES/Airbus DS, USDA, USGS, AeroGRID, IGN, and the GIS User Community

Legend

- Proposed Structures
- Proposed Hunterstown-Orrtanna 115 kV Transmission Line
- Existing 115 kV Transmission Lines
- Existing 500 kV Transmission Lines
- Existing Transmission Line Right of Way (ROW)
- Properties Crossed by ROW
- Parcel Boundary

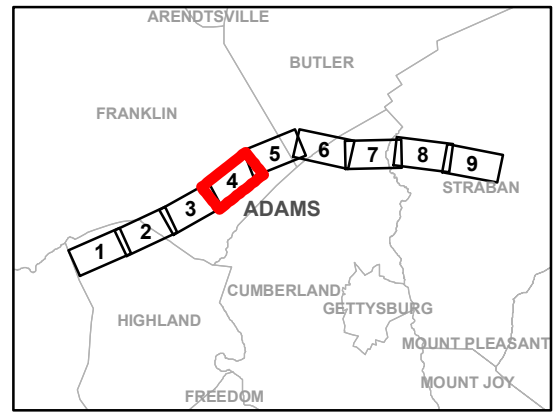
Notes

- Existing transmission line alignments provided by PowerMap.

NAD 1983 State Plane
 Pennsylvania South FIPS 3702
 Projection: Lambert Conformal Conic
 Linear Unit: US Foot

References:
 Existing Transmission Network (PowerMap)
 Existing Orrtanna 115 kV Line (FirstEnergy)
 Existing ROW (FirstEnergy)
 World Imagery Basemap (ESRI)
 Parcel Lines (Adams County)

0 200 400 800
 Feet
 1 inch = 400 feet



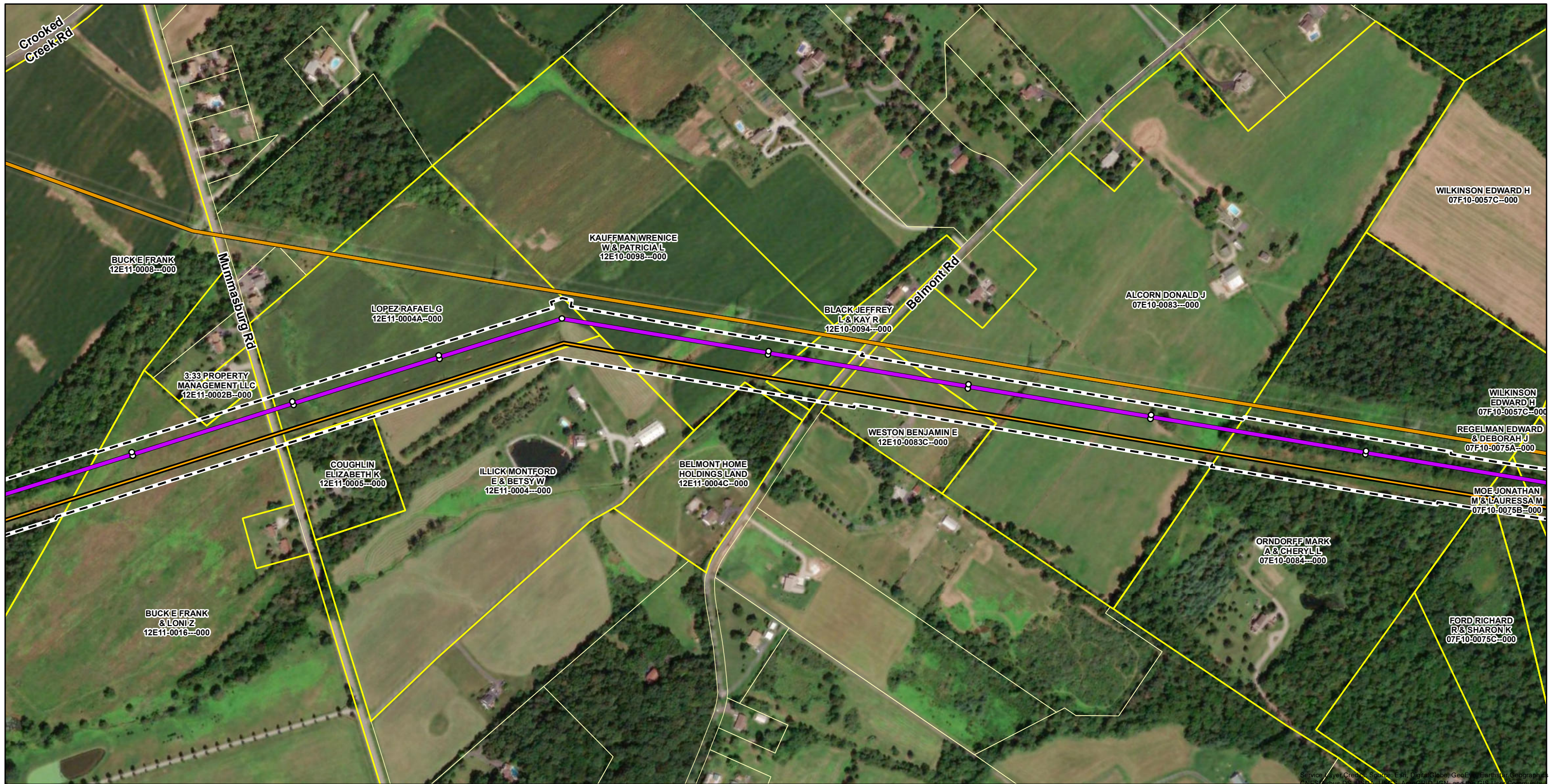
AECOM

EXHIBIT 14
Aerial Overview Map

Hunterstown-Orrtanna 115 kV
 Transmission Line Project

Page 4 of 9
 Adams County, Pennsylvania
 FirstEnergy Corporation: Akron, Ohio

Prepared By: DJYNAB	Checked By: BAB
Job: Orrtanna	Date: 10/23/2019



Legend

- Proposed Structures
- Proposed Hunterstown-Orrtanna 115 kV Transmission Line
- Existing 115 kV Transmission Lines
- Existing 500 kV Transmission Lines
- - - Existing Transmission Line Right of Way (ROW)
- ▭ Properties Crossed by ROW
- ▭ Parcel Boundary

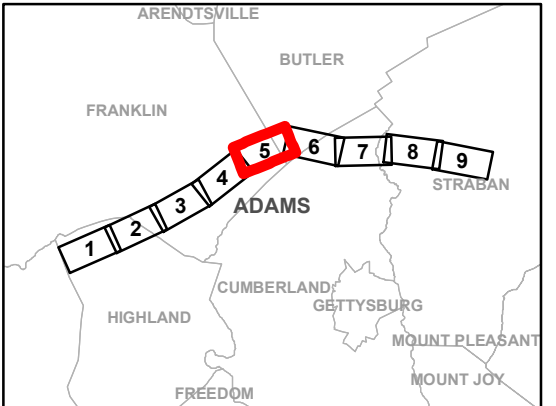
Notes

- Existing transmission line alignments provided by PowerMap.

NAD 1983 State Plane
 Pennsylvania South FIPS 3702
 Projection: Lambert Conformal Conic
 Linear Unit: US Foot

References:
 Existing Transmission Network (PowerMap)
 Existing Orrtanna 115 kV Line (FirstEnergy)
 Existing ROW (FirstEnergy)
 World Imagery Basemap (ESRI)
 Parcel Lines (Adams County)

0 200 400 800
 Feet
 1 inch = 400 feet



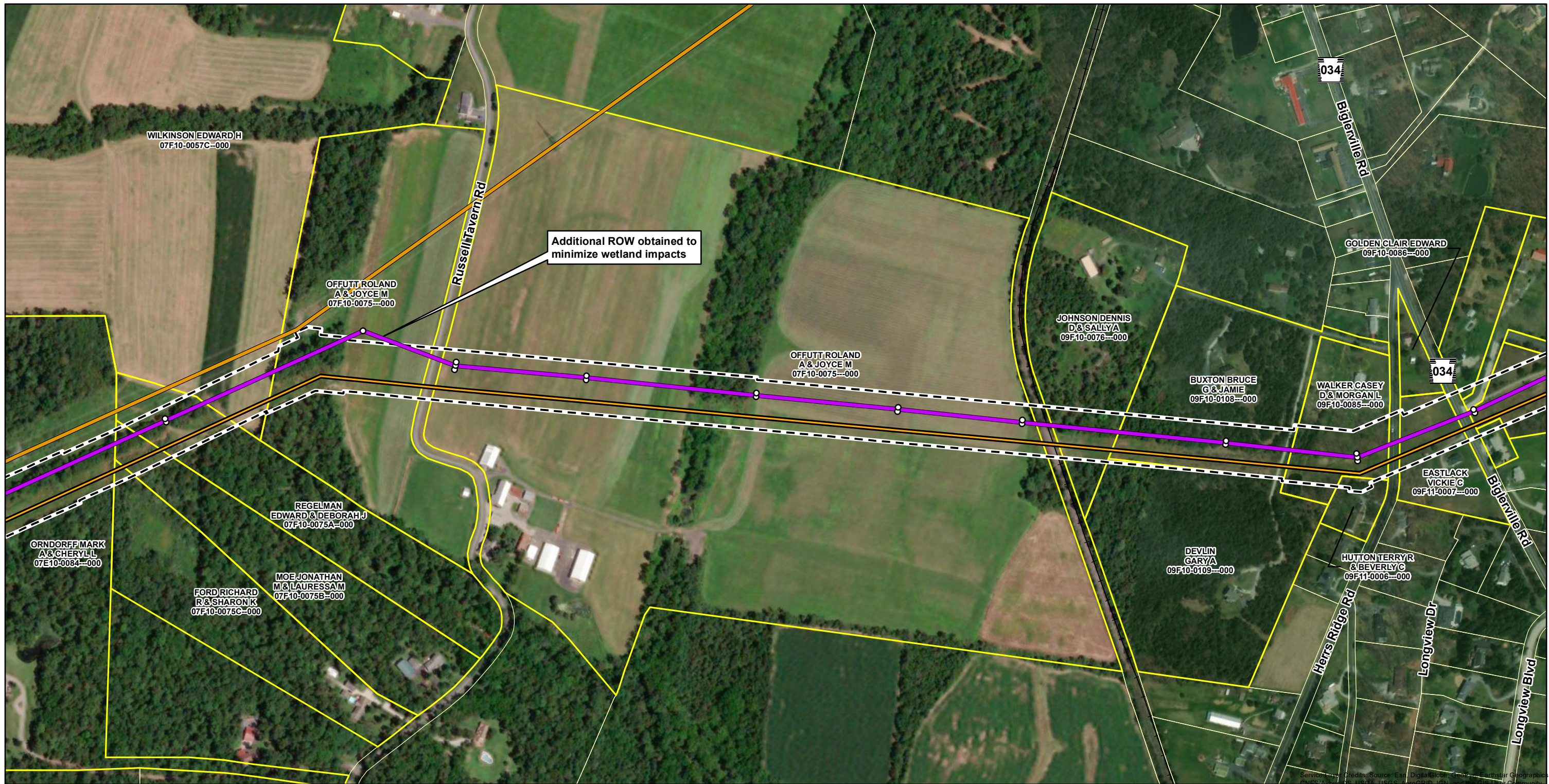
AECOM

EXHIBIT 14
Aerial Overview Map

Hunterstown-Orrtanna 115 kV
 Transmission Line Project

Page 5 of 9
 Adams County, Pennsylvania
 FirstEnergy Corporation: Akron, Ohio

Prepared By: DJYNAB	Checked By: BAB
Job: Orrtanna	Date: 10/23/2019



Legend

- Proposed Structures
- Proposed Hunterstown-Orrtanna 115 kV Transmission Line
- Existing 115 kV Transmission Lines
- Existing 500 kV Transmission Lines
- Existing Transmission Line Right of Way (ROW)
- Properties Crossed by ROW
- Parcel Boundary

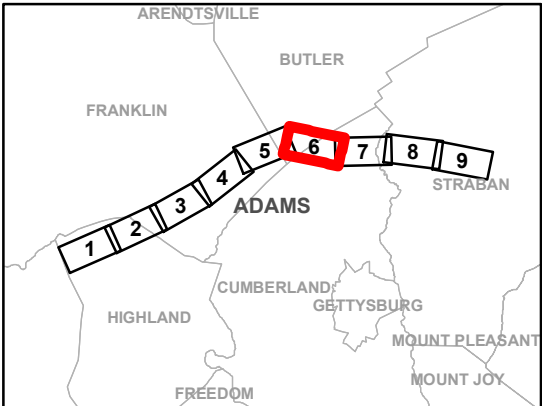
Notes

- Existing transmission line alignments provided by PowerMap.

NAD 1983 State Plane
 Pennsylvania South FIPS 3702
 Projection: Lambert Conformal Conic
 Linear Unit: US Foot

References:
 Existing Transmission Network (PowerMap)
 Existing Orrtanna 115 kV Line (FirstEnergy)
 Existing ROW (FirstEnergy)
 World Imagery Basemap (ESRI)
 Parcel Lines (Adams County)

0 200 400 800
 Feet
 1 inch = 400 feet



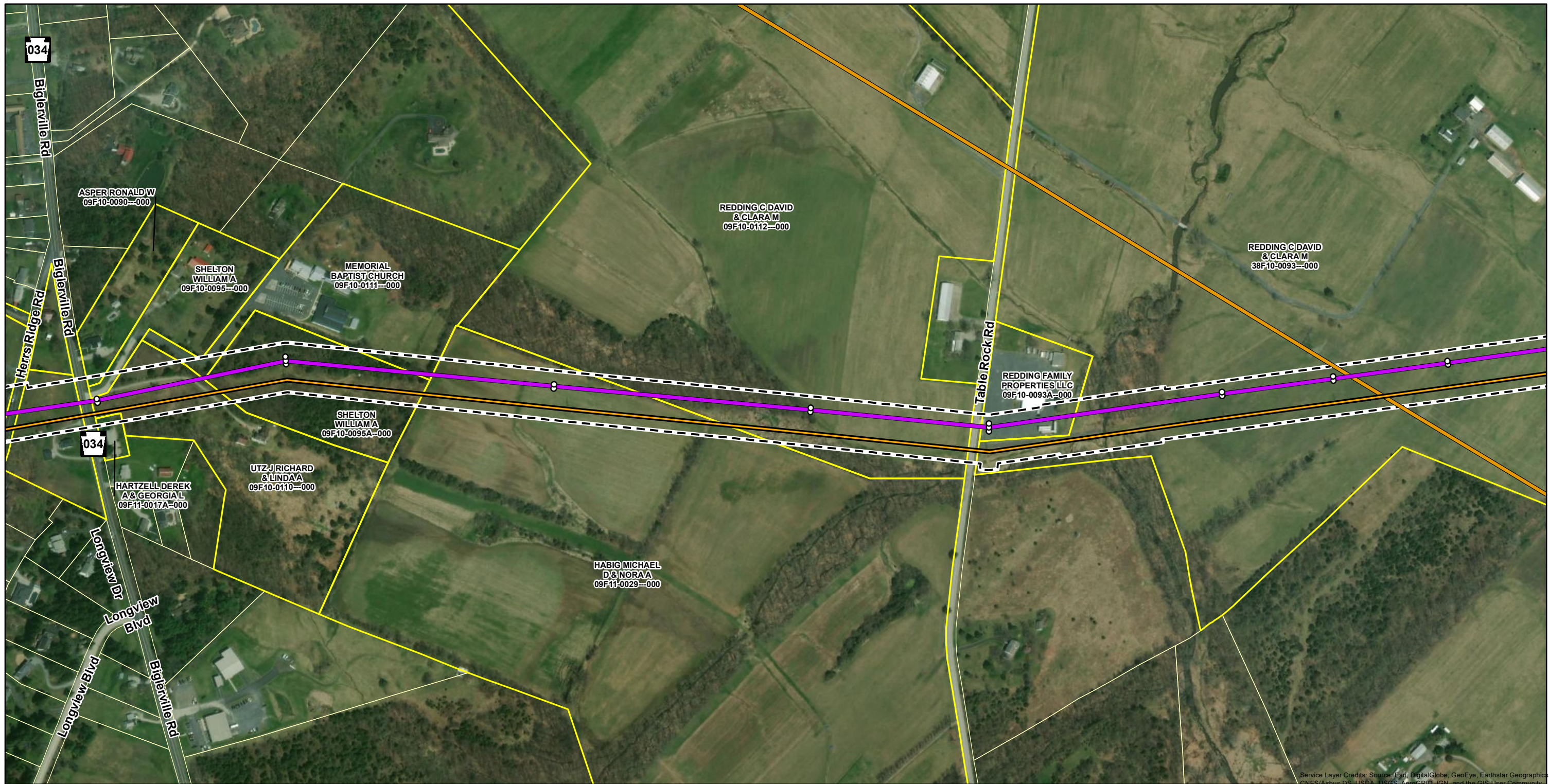
AECOM

EXHIBIT 14
Aerial Overview Map

Hunterstown-Orrtanna 115 kV
 Transmission Line Project

Page 6 of 9
 Adams County, Pennsylvania
 FirstEnergy Corporation: Akron, Ohio

Prepared By: DJYNAB	Checked By: BAB
Job: Orrtanna	Date: 10/23/2019



Service Layer Credits: Source: Esri, DigitalGlobe, GeoEye, Earthstar Geographics, CNES/Airbus DS, USDA, USGS, AeroGRID, IGN, and the GIS User Community

Legend

- Proposed Structures
- Proposed Hunterstown-Orrtanna 115 kV Transmission Line
- Existing 115 kV Transmission Lines
- Existing 500 kV Transmission Lines
- Existing Transmission Line Right of Way (ROW)
- Properties Crossed by ROW
- Parcel Boundary

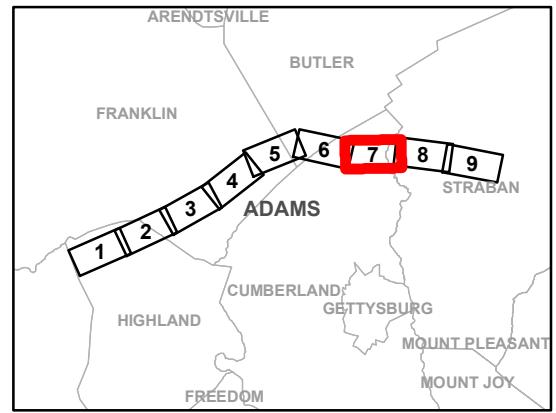
Notes

- Existing transmission line alignments provided by PowerMap.

NAD 1983 State Plane
 Pennsylvania South FIPS 3702
 Projection: Lambert Conformal Conic
 Linear Unit: US Foot

References:
 Existing Transmission Network (PowerMap)
 Existing Orrtanna 115 kV Line (FirstEnergy)
 Existing ROW (FirstEnergy)
 World Imagery Basemap (ESRI)
 Parcel Lines (Adams County)

0 200 400 800
 Feet
 1 inch = 400 feet



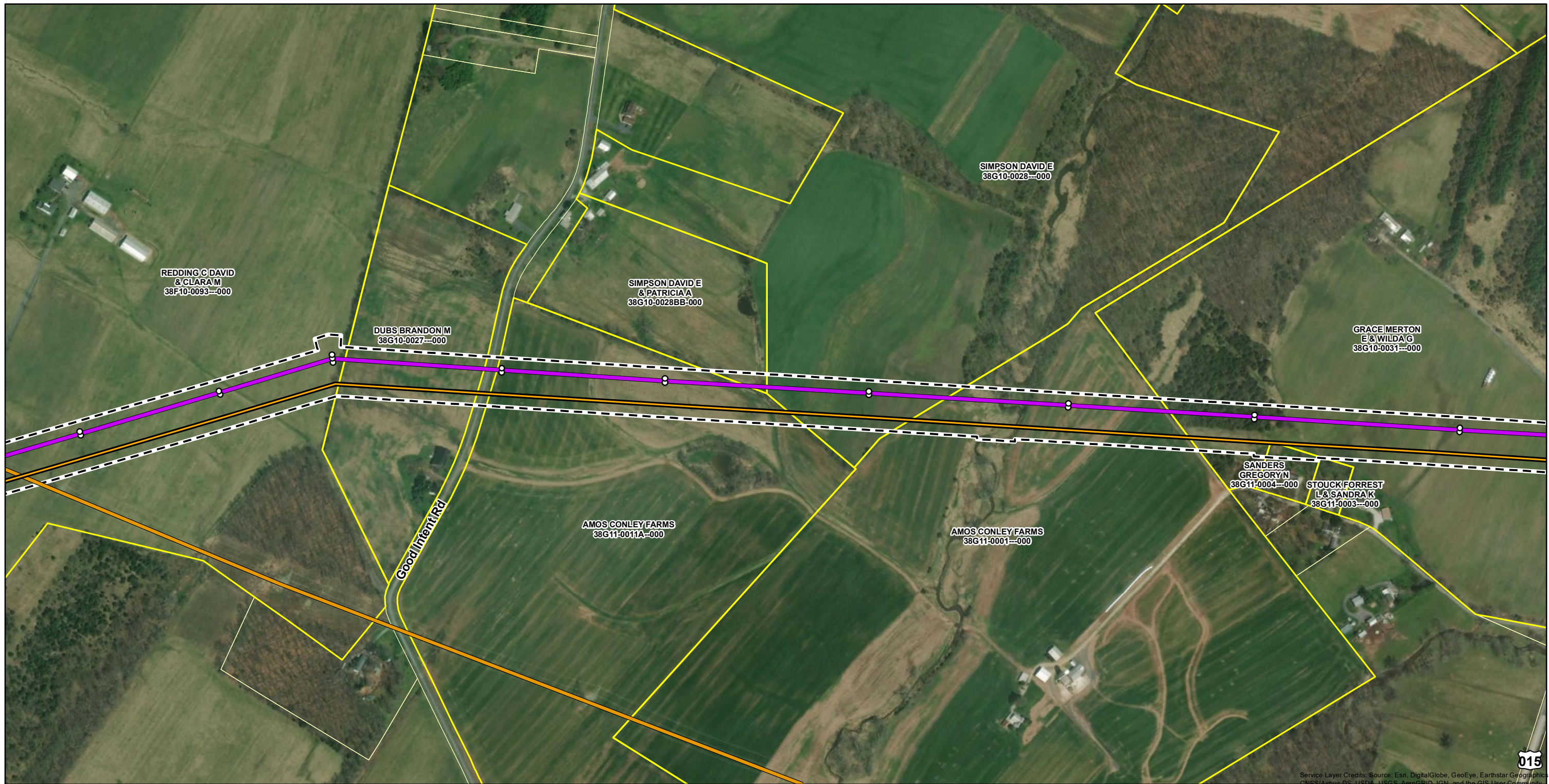
AECOM

EXHIBIT 14
Aerial Overview Map

Hunterstown-Orrtanna 115 kV
 Transmission Line Project

Page 7 of 9
 Adams County, Pennsylvania
 FirstEnergy Corporation: Akron, Ohio

Prepared By: DJYNAB	Checked By: BAB
Job: Orrtanna	Date: 10/23/2019



Service Layer Credits: Source: Esri, DigitalGlobe, GeoEye, Earthstar Geographics, CNES/Airbus DS, USDA, USGS, AeroGRID, IGN, and the GIS User Community

Legend

- Proposed Structures
- Proposed Hunterstown-Orrtanna 115 kV Transmission Line
- Existing 115 kV Transmission Lines
- Existing 500 kV Transmission Lines
- - - Existing Transmission Line Right of Way (ROW)
- ▭ Properties Crossed by ROW
- ▭ Parcel Boundary

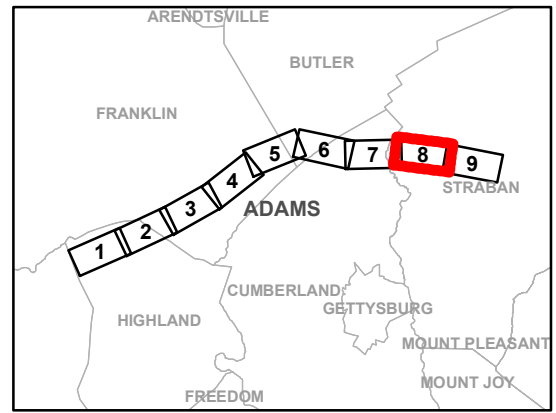
Notes

- Existing transmission line alignments provided by PowerMap.

NAD 1983 State Plane
 Pennsylvania South FIPS 3702
 Projection: Lambert Conformal Conic
 Linear Unit: US Foot

References:
 Existing Transmission Network (PowerMap)
 Existing Orrtanna 115 kV Line (FirstEnergy)
 Existing ROW (FirstEnergy)
 World Imagery Basemap (ESRI)
 Parcel Lines (Adams County)

0 200 400 800
 Feet
 1 inch = 400 feet



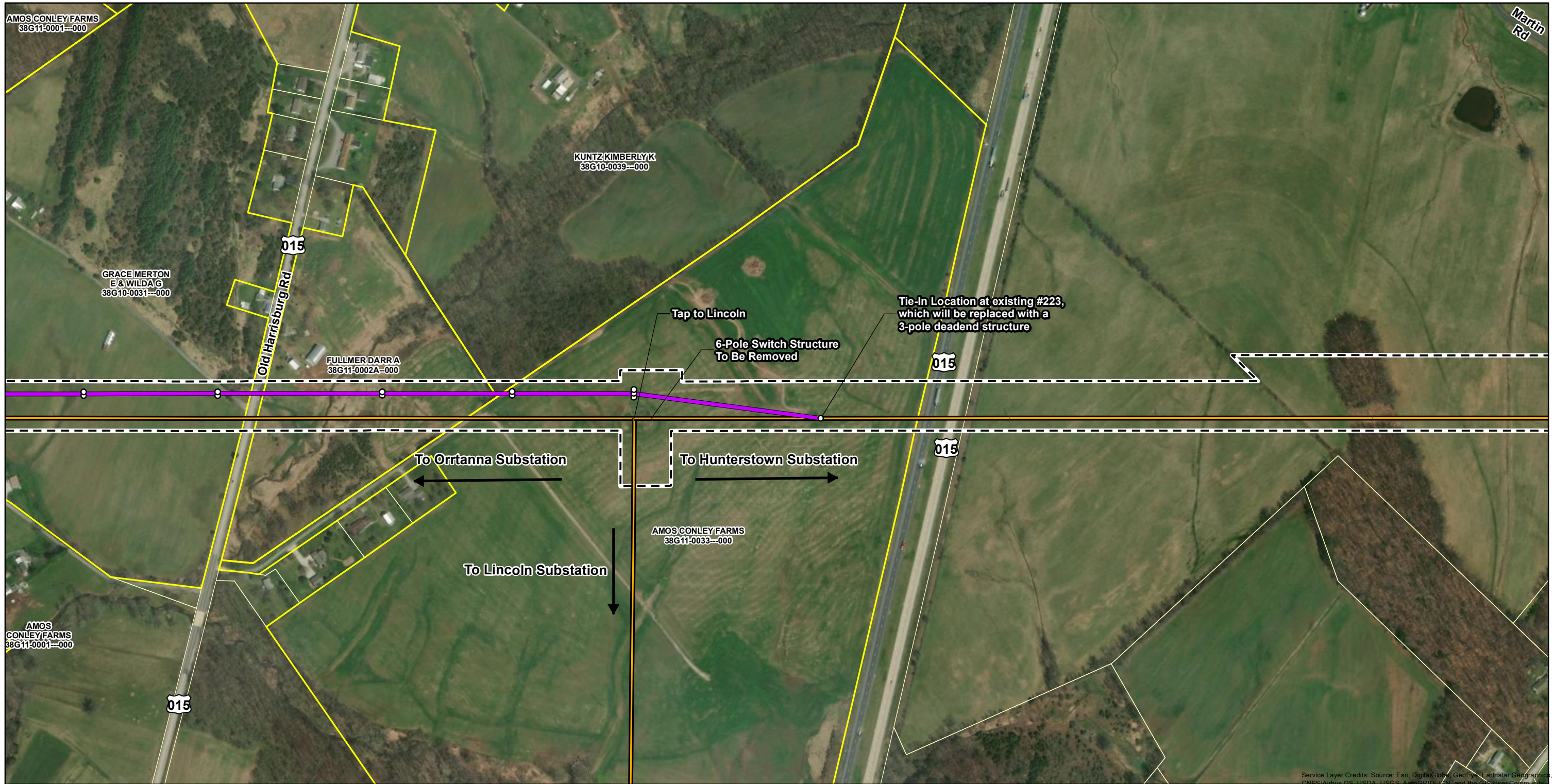
AECOM

EXHIBIT 14
Aerial Overview Map

Hunterstown-Orrtanna 115 kV
 Transmission Line Project

Page 8 of 9
 Adams County, Pennsylvania
 FirstEnergy Corporation: Akron, Ohio

Prepared By: DJYNAB	Checked By: BAB
Job: Orrtanna	Date: 10/23/2019



Service Layer Credits: Source: Esri, DigitalGlobe, GeoEye, Earthstar Geographics, CNES/Airbus DS, USDA, USGS, AeroGRID, IGN, and the GIS User Community

Legend

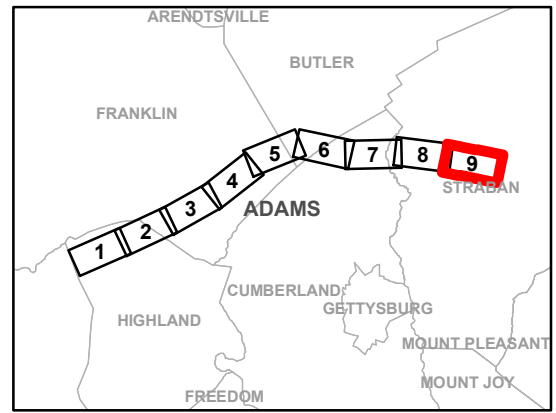
- Proposed Structures
- Proposed Hunterstown-Orrtanna 115 kV Transmission Line
- Existing 115 kV Transmission Lines
- - - Existing Transmission Line Right of Way (ROW)
- ▭ Properties Crossed by ROW
- ▭ Parcel Boundary

Notes

- Existing transmission line alignments provided by PowerMap.

NAD 1983 State Plane
 Pennsylvania South FIPS 3702
 Projection: Lambert Conformal Conic
 Linear Unit: US Foot

References:
 Existing Transmission Network (PowerMap)
 Existing Orrtanna 115 kV Line (FirstEnergy)
 Existing ROW (FirstEnergy)
 World Imagery Basemap (ESRI)
 Parcel Lines (Adams County)



AECOM

EXHIBIT 14
Aerial Overview Map

Hunterstown-Orrtanna 115 kV
 Transmission Line Project
 Page 9 of 9
 Adams County, Pennsylvania
 FirstEnergy Corporation: Akron, Ohio

Prepared By: DJYNAB	Checked By: BAB
Job: Orrtanna	Date: 10/24/2019