

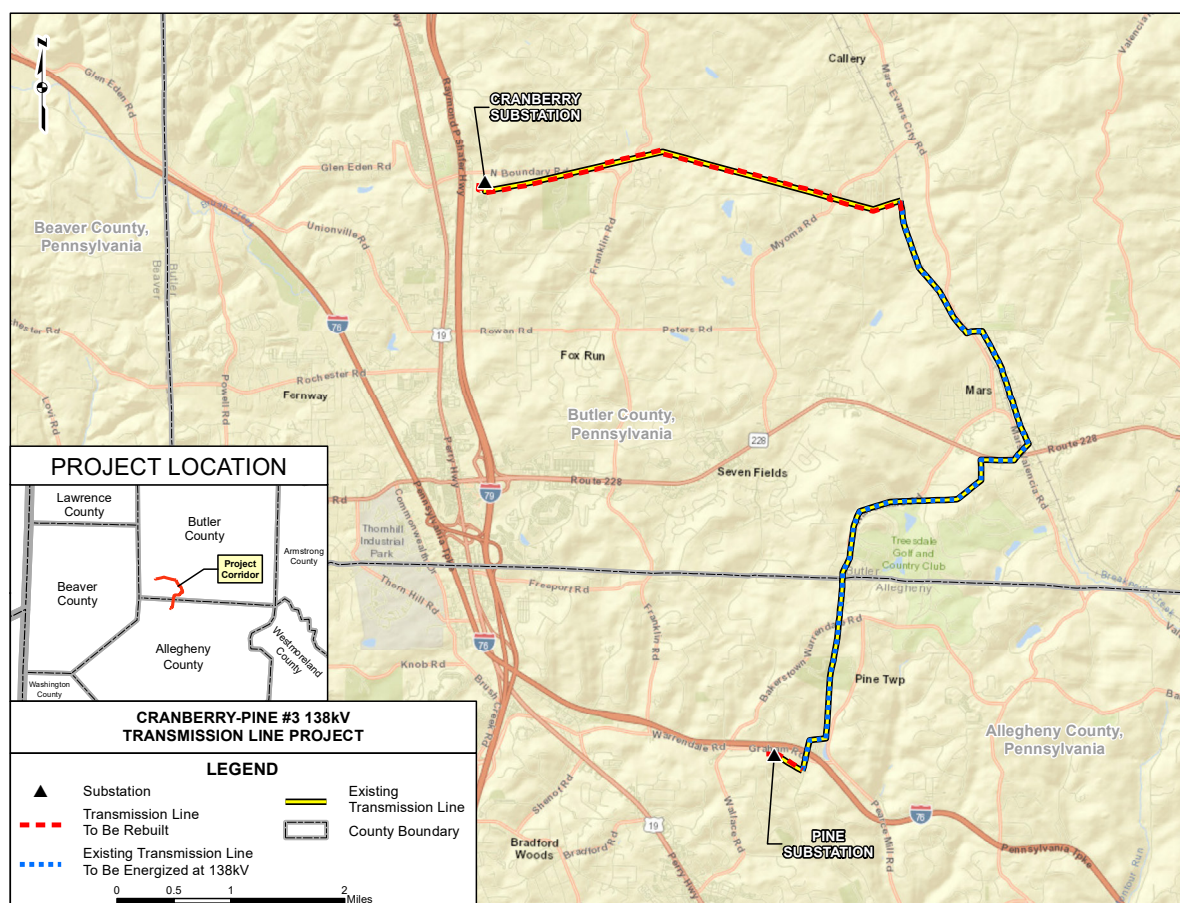
Cranberry-Pine No. 3 138-Kilovolt Transmission Project

Butler and Allegheny counties, Pennsylvania

At FirstEnergy, we are committed to delivering the reliable power our customers rely on every day. To support this, American Transmission Systems, Inc. (ATSI), a FirstEnergy company, has identified the need for a new 138-kilovolt (kV) transmission line in Butler County, Pennsylvania. Additionally, ATSI plans to energize an existing 138-kV transmission line spanning Butler and Allegheny counties. These enhancements are designed to strengthen service reliability and accommodate ongoing residential and commercial growth in the region.

Project Overview

ATSI will build a new approximately 4-mile long 138-kV transmission line that will connect the existing Cranberry Substation to the existing Maple-Pine 138/69-kV Transmission Line. In addition, the existing Maple-Pine 138-kV Transmission Line will be energized to the existing Pine Substation. The project is needed to support future residential load growth and business expansion in the Cranberry Township, Adams Township and Pine Township areas, as well as enhance reliability for customers throughout the region.



Continued on back



Preconstruction Activities and Approvals

A detailed routing study was performed to identify potential routes for the new line. These routes were carefully evaluated to minimize impacts on environmentally sensitive areas, property owners and communities. ATSI will seek approval from the Pennsylvania Public Utility Commission (PAPUC) for the project.

Detailed wetland, stream and other environmental and cultural resource evaluations will be performed along the preferred transmission line route. Necessary permits will be secured from state and federal agencies before construction.

Easements

The new 138-kV transmission line will be located generally within an existing 200-foot-wide easement as well as an expansion of the right-of-way in some areas between 15-85 additional feet. Company representatives will work closely with local officials and affected landowners to keep them updated on the project.

Preliminary Project Timeline

Summer-Fall 2018 Routing Study
January 2019 1st Public Information Meetings
Winter 2019-Fall 2025 Real Estate Negotiations
Summer 2025 2nd Public Information Meetings
Fall 2025 Filing with the Pennsylvania Public Utility Commission
Spring 2027 Permits Received/Construction Begins on the 138-kV Transmission Line
December 15, 2028 Project In-Service

Contact

Please reach out to our dedicated hotline at 888-311-4737 with questions or email us at transmissionprojects@firstenergycorp.com.

About Energize365

Energize365 is a multi-year grid evolution program focused on transmission and distribution investments that will deliver the power FirstEnergy's customers depend on today while also meeting the challenges of tomorrow. With planned investments of \$28 billion between 2025 and 2029, the program will create a smarter, more secure grid that will meet and exceed reliability targets and accommodate electric vehicles, the electrification of homes and businesses and clean energy sources.