



DARROW-RIVERWAY & EVANS-RIVERWAY 138-KILOVOLT TRANSMISSION LINE PROJECT

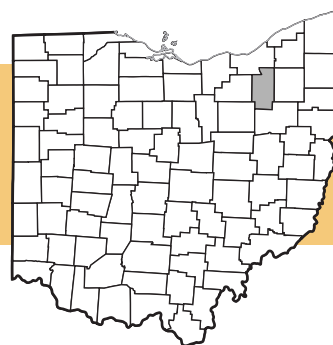
At FirstEnergy, it is our responsibility to deliver the power our customers depend on in their daily lives. American Transmission Systems, Inc. (ATSI), a FirstEnergy company, has identified a need for a new substation and two new 138-Kilovolt (kV) transmission lines in Summit County, Ohio, to enhance electric service reliability for existing customers, add redundancy to the network and allow for future growth.

PROJECT OVERVIEW

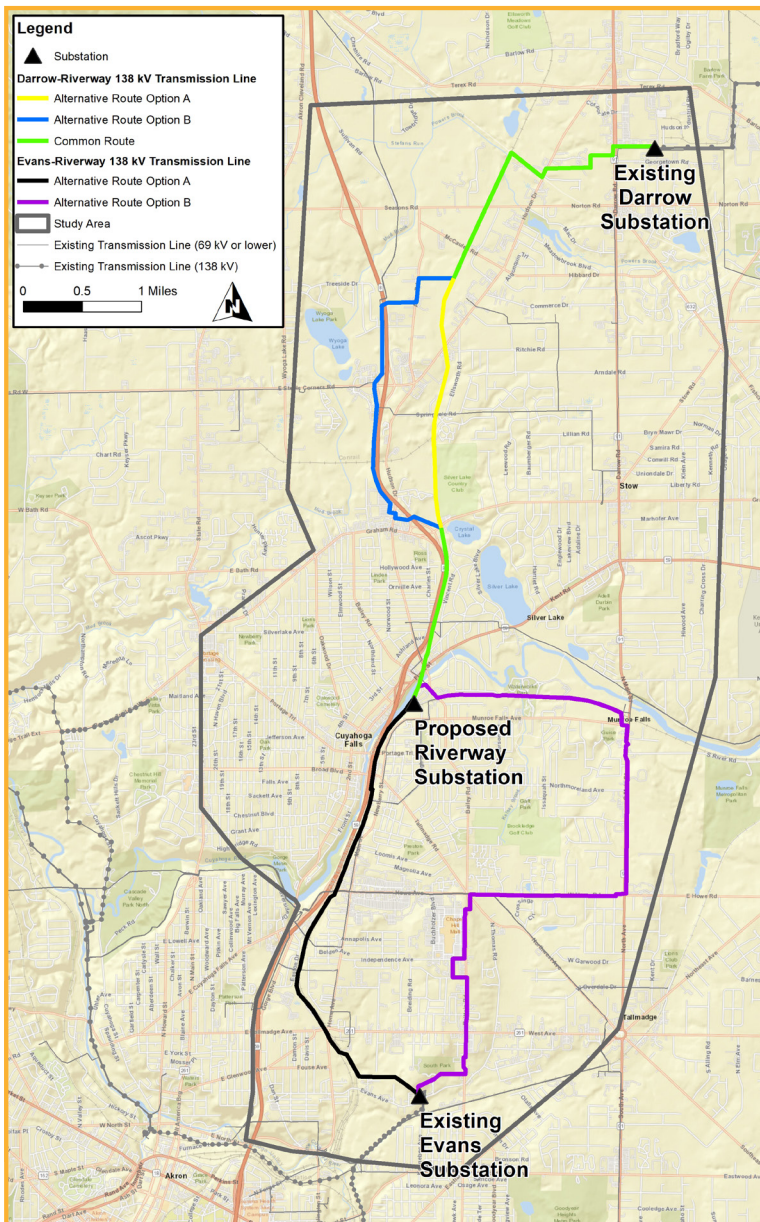
ATSI evaluated the existing transmission system in and around the cities of Akron, Cuyahoga Falls, Hudson, Silver Lake and Stow in Summit County and identified the need to construct a new 138-kV substation (Riverway Substation) and two new 138-kV transmission lines to connect the new substation with the existing 138-kV transmission system. One line will extend approximately seven miles from the existing Darrow Substation in Hudson to the proposed Riverway Substation in Cuyahoga Falls, and the second line will extend approximately five miles from the Evans Substation in Akron to the Riverway Substation. The transmission lines will be supported primarily by wood pole structures, using steel poles only where necessary.

Construction of the proposed project will reinforce the transmission and distribution systems for approximately 49,000 customers in the communities of Akron, Cuyahoga Falls, Hudson, Silver Lake and Stow. In addition, the project will allow for greater operational flexibility and future load growth.

Continued on back



Project Location:
Summit County, OH



PJM, the regional transmission system operator, and the PJM stakeholders have reviewed the proposed project and have assigned the supplemental upgrade identification number s2387. More information about the project can be found at www.pjm.com.

LINE SITING AND APPROVALS

A detailed routing study was performed to identify potential routes for the proposed transmission lines that will connect to the proposed Riverway Substation. These routes were carefully evaluated to minimize impacts to environmentally sensitive areas, property owners and communities. ATSI will seek approval from the Ohio Power Siting Board (OPSB) for the project.

To support the siting process, detailed wetland, stream and other environmental and cultural resource evaluations will be performed. Necessary permits will be secured from local, state and federal agencies before construction.

EASEMENTS

ATSI will negotiate with property owners to acquire necessary easements and vegetation management rights to support the new transmission lines. Field agents will contact property owners to discuss transmission line easements and/or any temporary access needed during construction.

PRELIMINARY PROJECT TIMELINE

Informal Public Open House	June 2022
Public Information Meeting	3rd Quarter 2022
Application Submittal with the Ohio Power Siting Board	4th Quarter 2022
Anticipated OPSB Order.....	4th Quarter2023
Start of Construction	1st Quarter 2025

ABOUT ENERGIZING THE FUTURE

Through *Energizing the Future*, FirstEnergy is upgrading and strengthening the transmission grid to meet the existing and future needs of our customers and communities. Projects are focused on upgrading or replacing aging equipment to harden our transmission infrastructure, reduce outages and cut maintenance costs; enhancing performance by building a smarter, more secure transmission system; and adding flexibility by building in redundancy and allowing system operators to react more swiftly to changing grid conditions.

For more information, visit firstenergycorp.com/transmission.

