

▲ Existing Substation

Proposed Study Segment

— Segment 2

— Existing Transmission Line (69 kV or lower)

— Existing Transmission Line (138 kV)

— Stream

— Waterbody

NWI Wetland

Parcel Boundary

ATSI

Transmission line routes are preliminary and subject to change

1 inch = 200 feet
when printed at 22x34

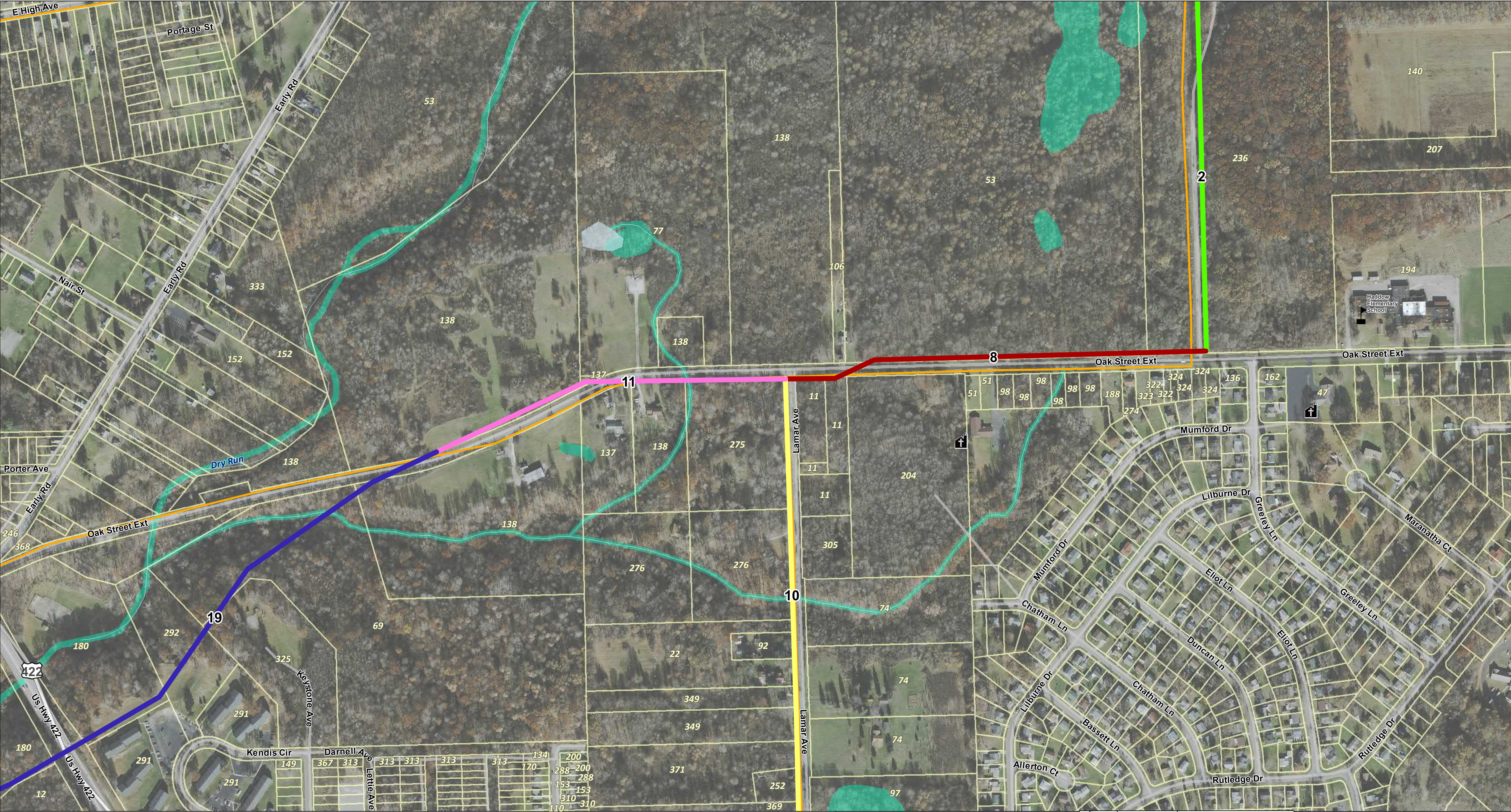
0 200 400 600
Feet

Imagery Source: NAIP, 2016

October 29, 2019

Aerial Map 1 of 7

ATSI
Lincoln Park - Riverbend
138kV Transmission Line Project



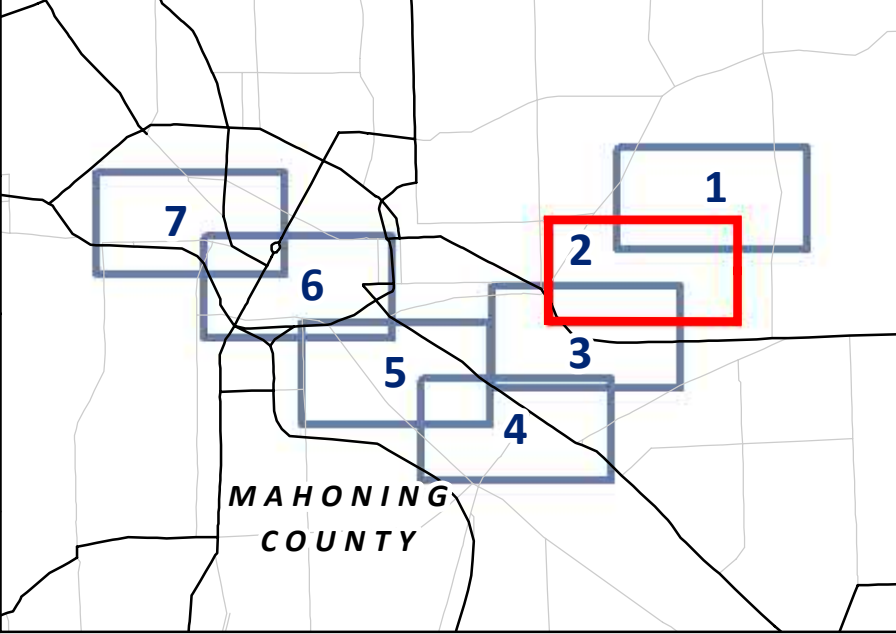
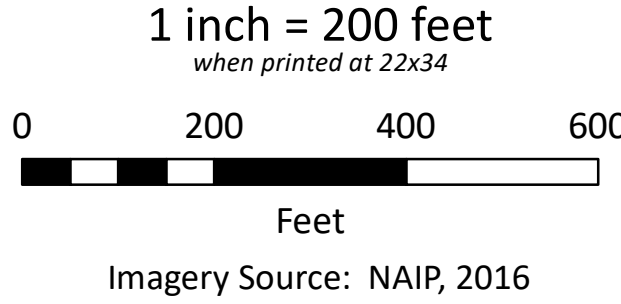
Proposed Study Segment

- Segment 2
- Segment 8
- Segment 10
- Segment 11
- Segment 19
- Existing Transmission Line (69 kV or lower)

- Stream
- Waterbody
- NWI Wetland
- Parcel Boundary
- Church
- School



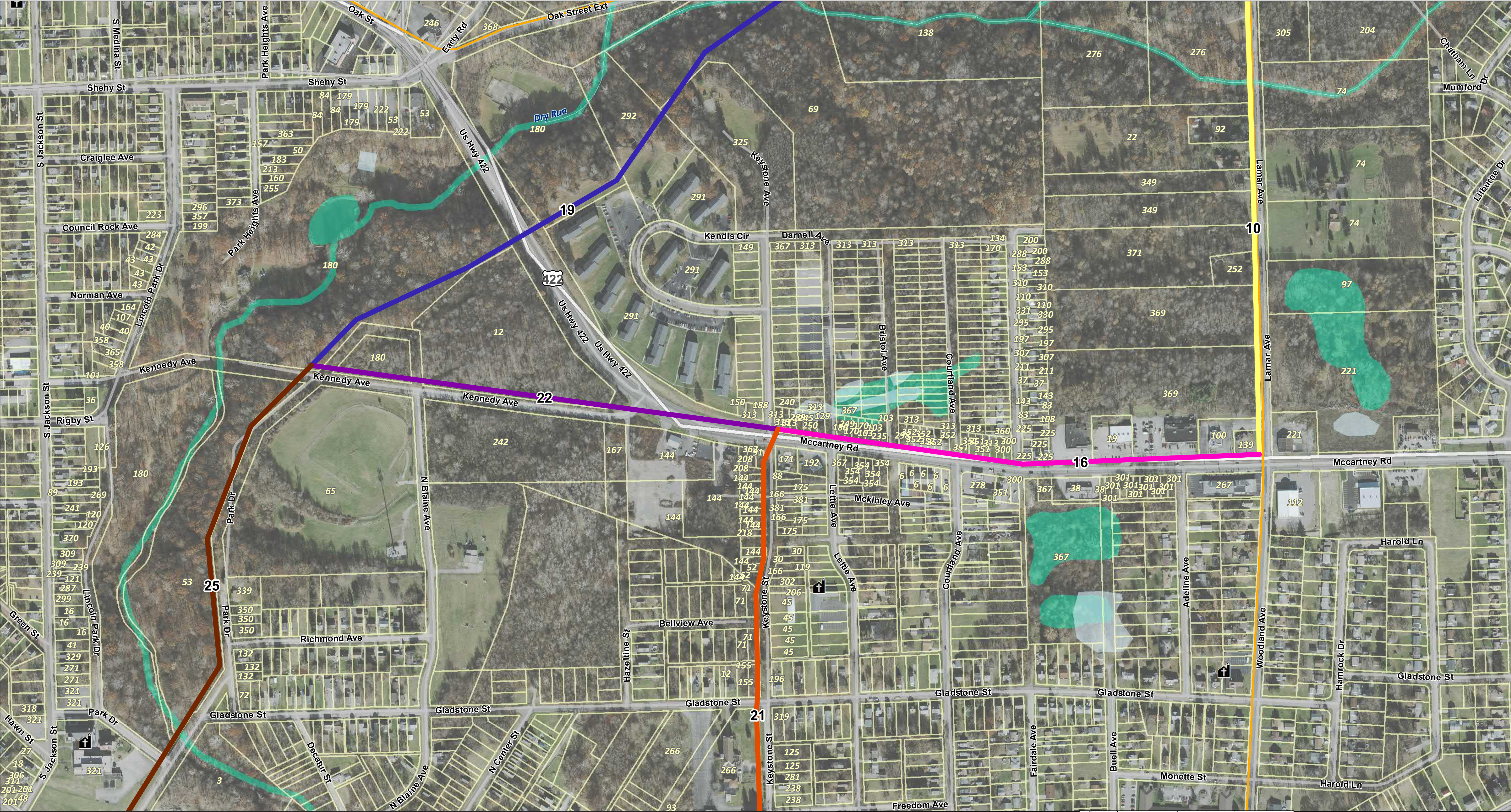
Transmission line routes are preliminary and subject to change



Aerial Map 2 of 7

ATSI
Lincoln Park - Riverbend
138kV Transmission Line Project

October 29, 2019



- Proposed Study Segment**
- Segment 10
 - Segment 16
 - Segment 19
 - Segment 21
 - Segment 22
 - Segment 25
- Existing Transmission Line (69 kV or lower)**
- Stream
 - Waterbody
 - NWI Wetland
 - Parcel Boundary
 - Church



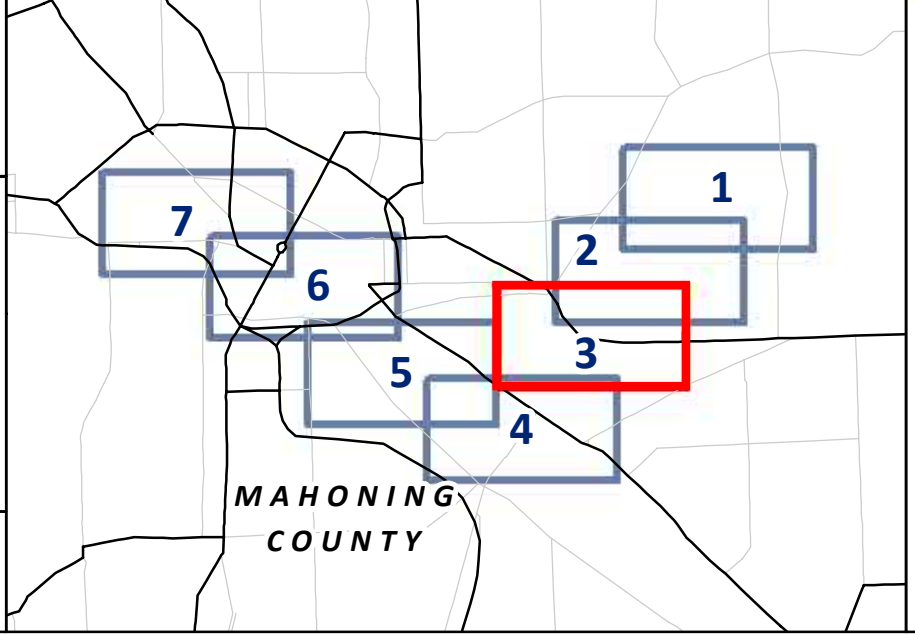
Transmission line routes are preliminary and subject to change

1 inch = 200 feet
when printed at 22x34

0 200 400 600
Feet

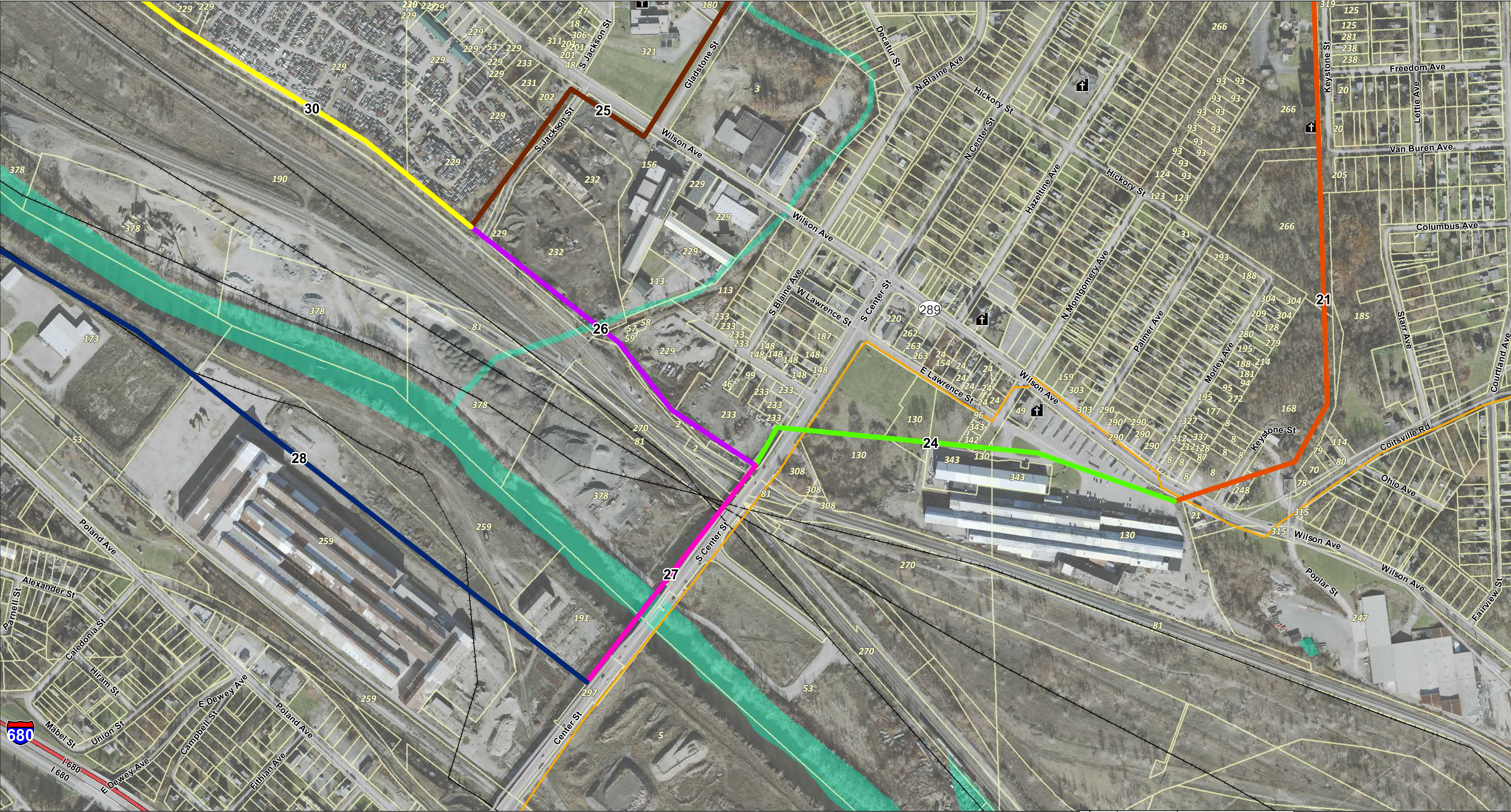
Imagery Source: NAIP, 2016

October 29, 2019



Aerial Map 3 of 7

ATSI
Lincoln Park - Riverbend
138kV Transmission Line Project



Proposed Study Segment

Segment 21

Segment 24

Segment 25

Segment 26

Segment 27

Segment 28

Segment 30

Existing Transmission Line (69 kV or lower)

Stream

NWI Wetland

Parcel Boundary

Church

Railroads (Local)



Transmission line routes are preliminary and subject to change

1 inch = 200 feet

when printed at 22x34

0

200

400

600

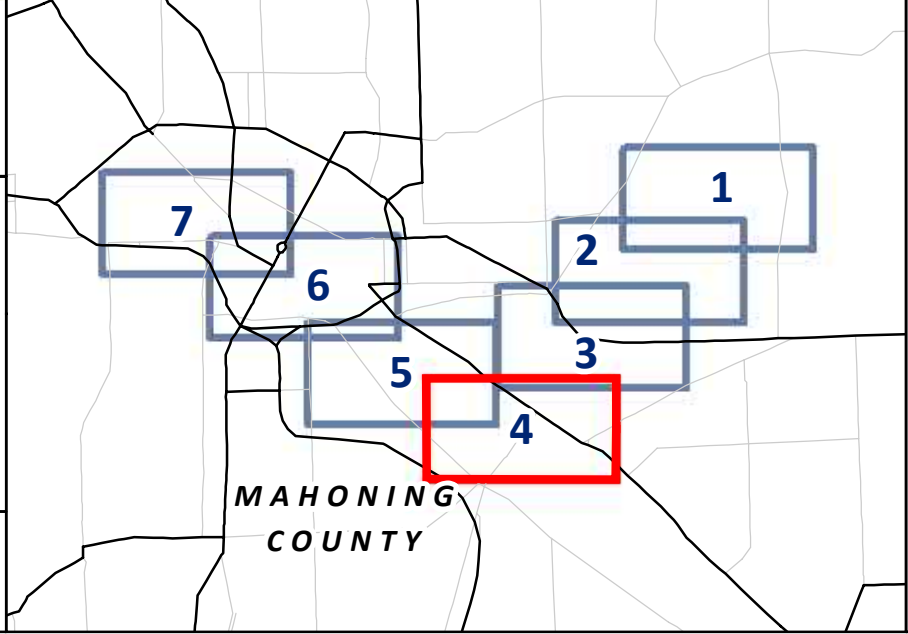
Feet

Imagery Source: NAIP, 2016

↑

N

October 29, 2019

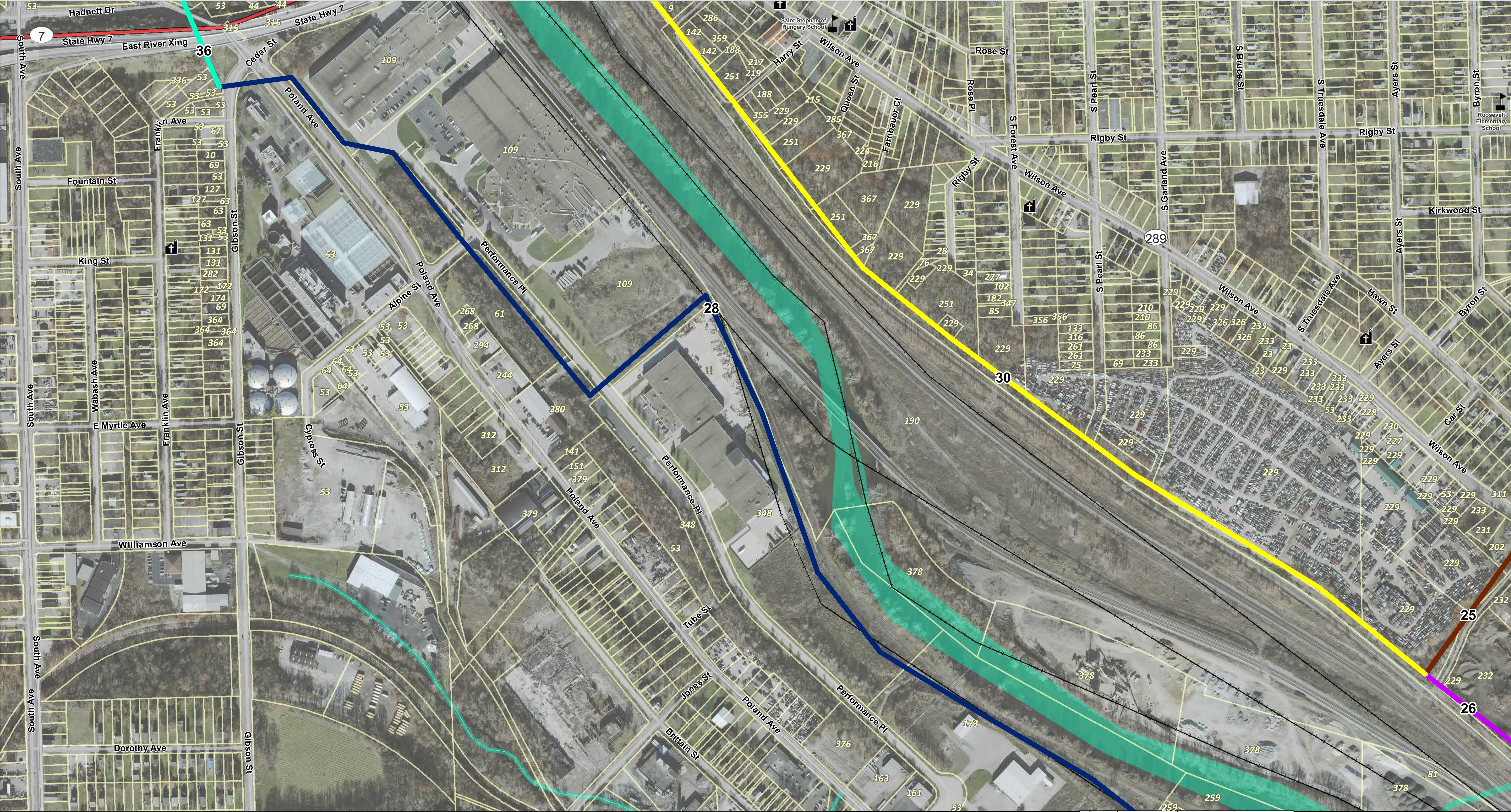


Aerial Map 4 of 7

ATSI

Lincoln Park - Riverbend

138kV Transmission Line Project



- Proposed Study Segment**
- Segment 25
 - Segment 26
 - Segment 28
 - Segment 30
 - Segment 36
 - Stream
- Legend**
- Waterbody
 - NWI Wetland
 - Parcel Boundary
 - Church
 - School
 - Railroads (Local)



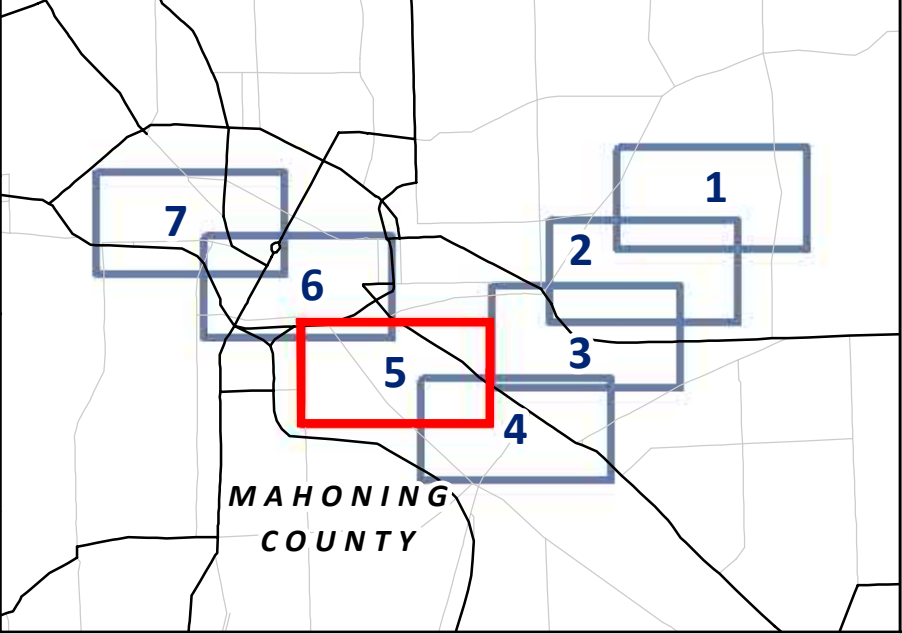
Transmission line routes are preliminary and subject to change

1 inch = 200 feet
when printed at 22x34

0 200 400 600
Feet

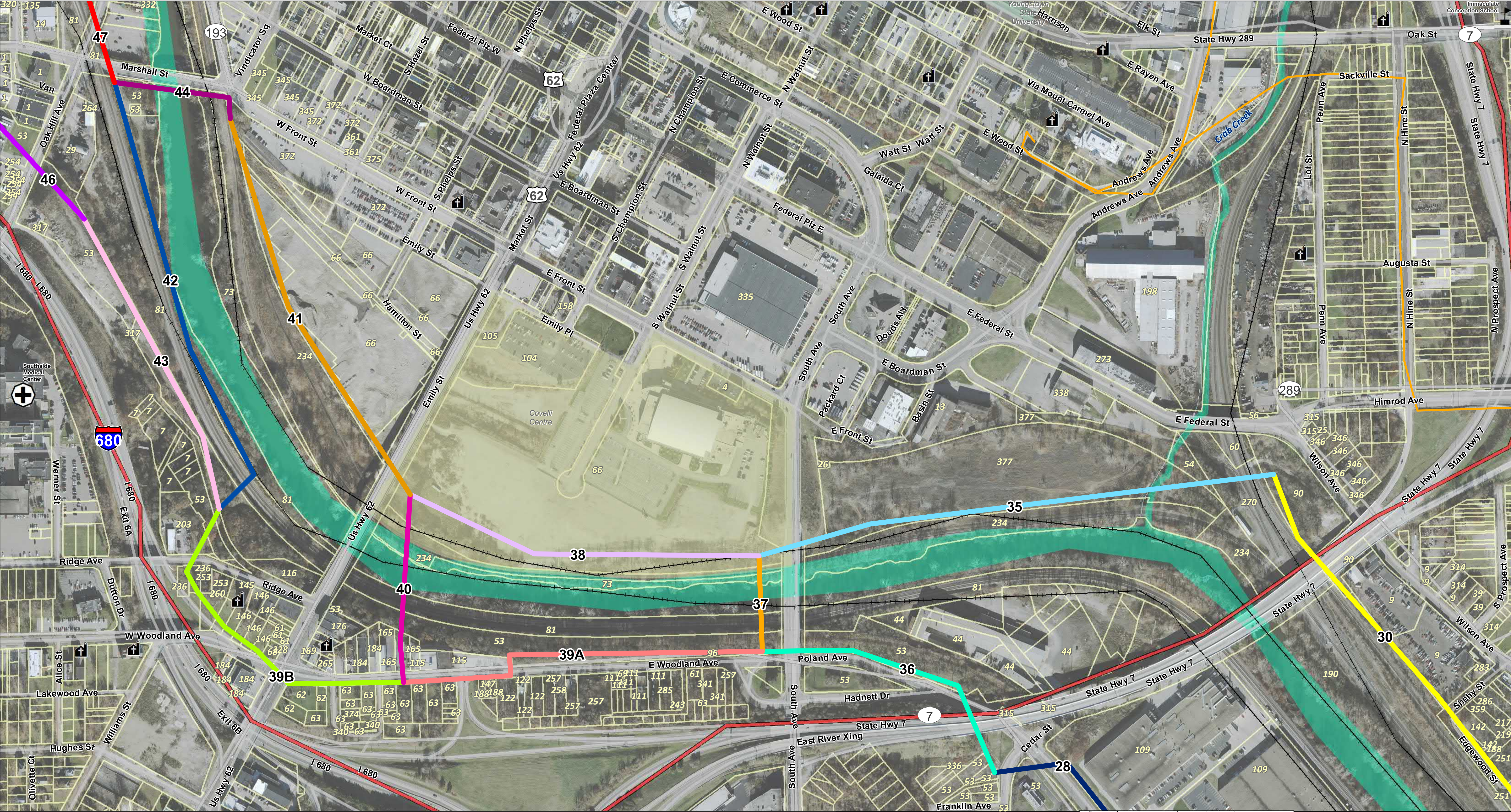
Imagery Source: NAIP, 2016

October 29, 2019



Aerial Map 5 of 7

ATSI
Lincoln Park - Riverbend
138kV Transmission Line Project



Proposed Study Segment

- Segment 28
- Segment 30
- Segment 35
- Segment 36
- Segment 37
- Segment 38
- Segment 39A
- Segment 39B
- Segment 40
- Segment 41
- Segment 42
- Segment 43
- Segment 44
- Segment 46
- Segment 47

Legend

- Existing Transmission Line (69 kV or lower)
- Stream
- NWI Wetland
- Parcel Boundary
- Church
- School
- Hospital
- Railroads (Local)
- Stadium
- University or College

ATSI

Transmission line routes are preliminary and subject to change

1 inch = 200 feet
when printed at 22x34

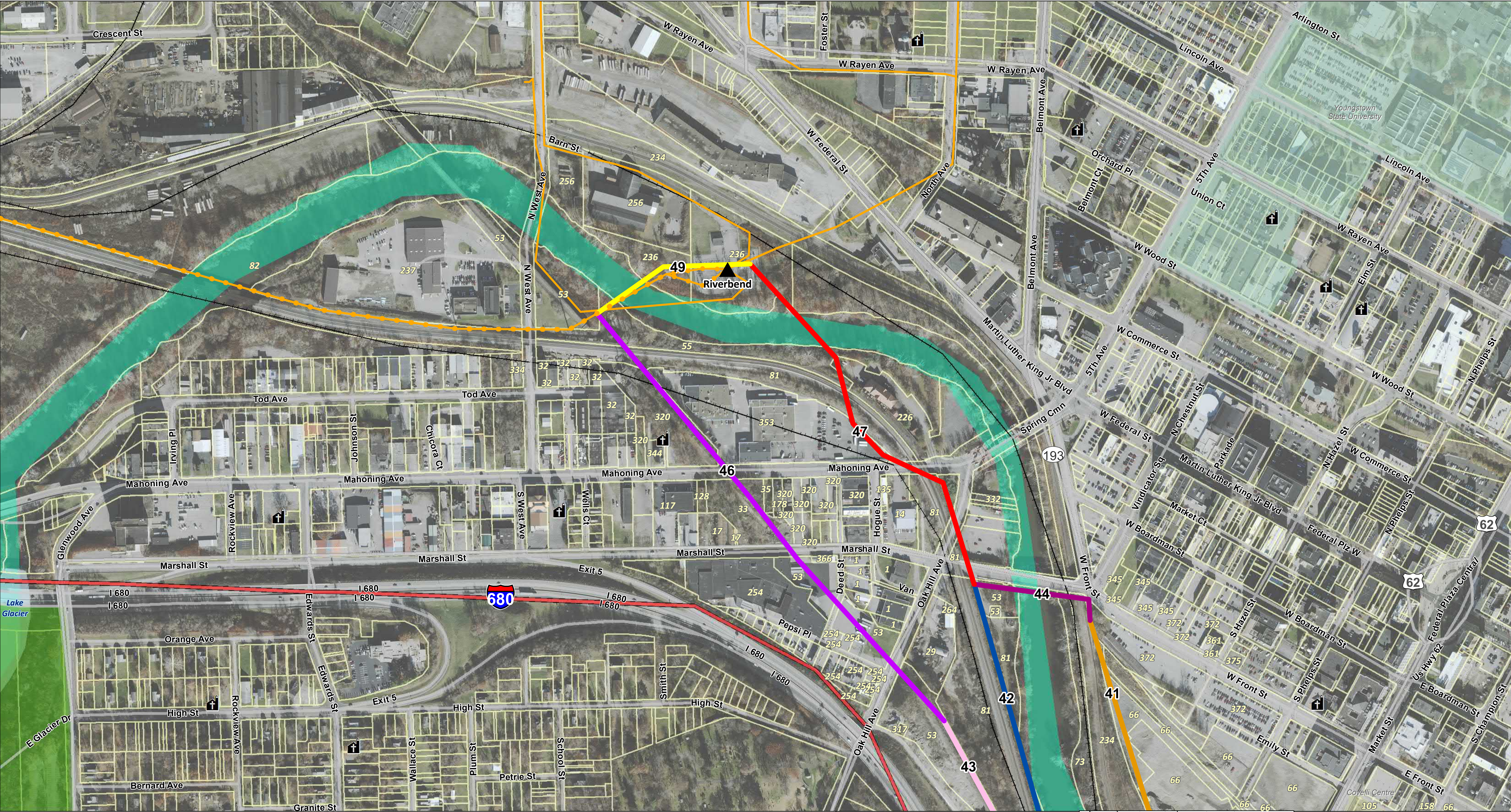
0 200 400 600 Feet

Imagery Source: NAIP, 2016

October 29, 2019

Aerial Map 6 of 7

ATSI
Lincoln Park - Riverbend
138kV Transmission Line Project



▲ Existing Substation

Proposed Study Segment

Segment 41

Segment 42

Segment 43

Segment 44

Segment 46

Segment 47

Segment 49

Existing Transmission Line (69 kV or lower)

Existing Transmission Line (138 kV)

Waterbody

NWI Wetland

Parcel Boundary

Church

Railroads (Local)

Stadium

University or College

Parks (Local)

ATSI

Transmission line routes are preliminary and subject to change

1 inch = 200 feet

when printed at 22x34

0

200

400

600

Feet

Imagery Source: NAIP, 2016

October 29, 2019

▲

N

7

6

5

4

3

2

1

MAHONING COUNTY

Aerial Map 7 of 7

ATSI

Lincoln Park - Riverbend

138kV Transmission Line Project