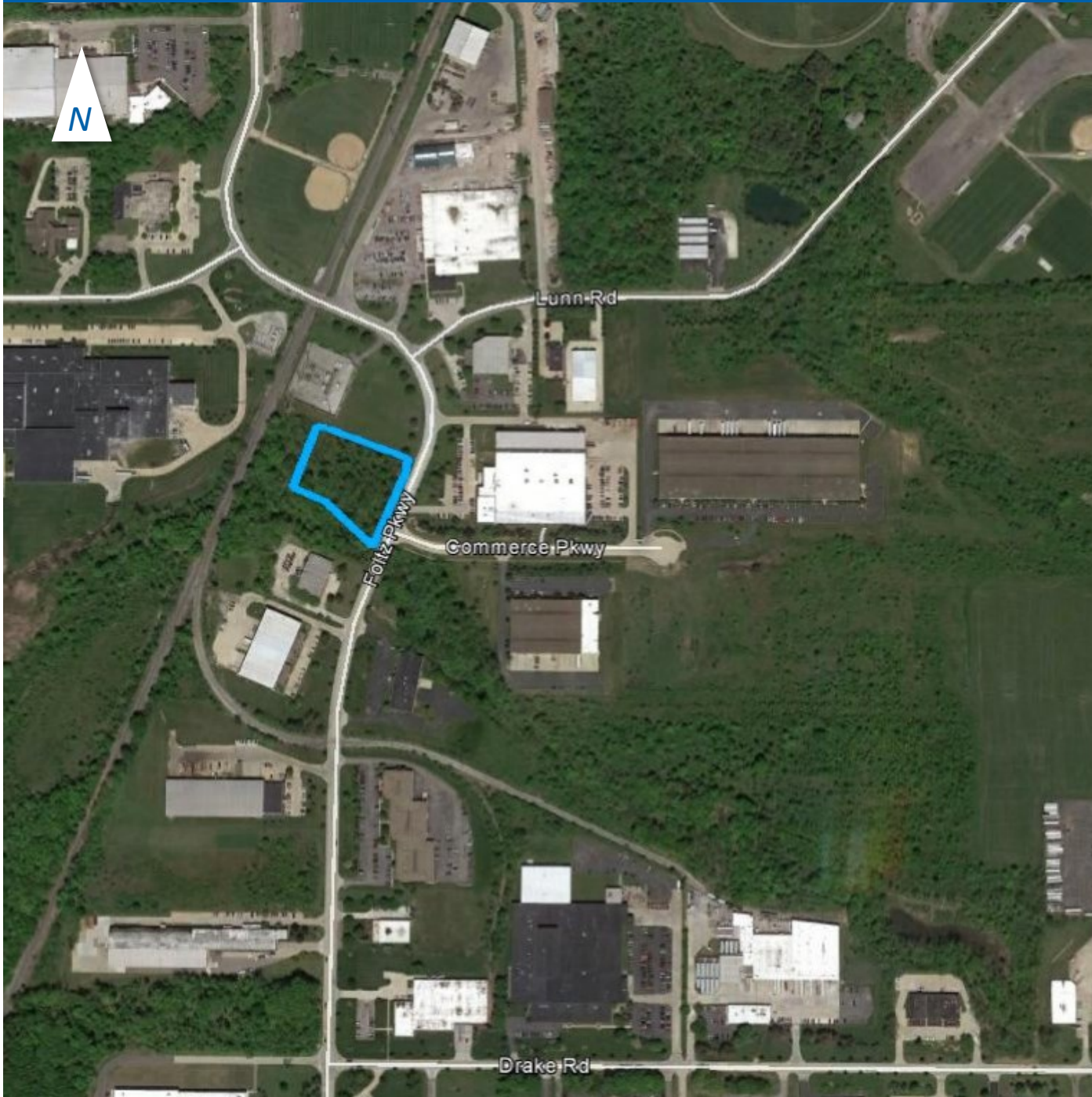


Land available: Foltz Pkwy, Strongsville, Cuyahoga County, OH



Property Information

of Parcels: 1

of Acres: ≈ 2

Land Use: G1 General Industrial

Coordinates: 41.295408°, -81.869591°

Parcel #: 39403006

The Cleveland Electric Illuminating Company ("CEI") will reserve easements or other necessary property interests for present / future facilities. CEI will reserve all mineral rights. All property availability is subject to further internal review.

Map data: Google Earth, @ 2017 Google