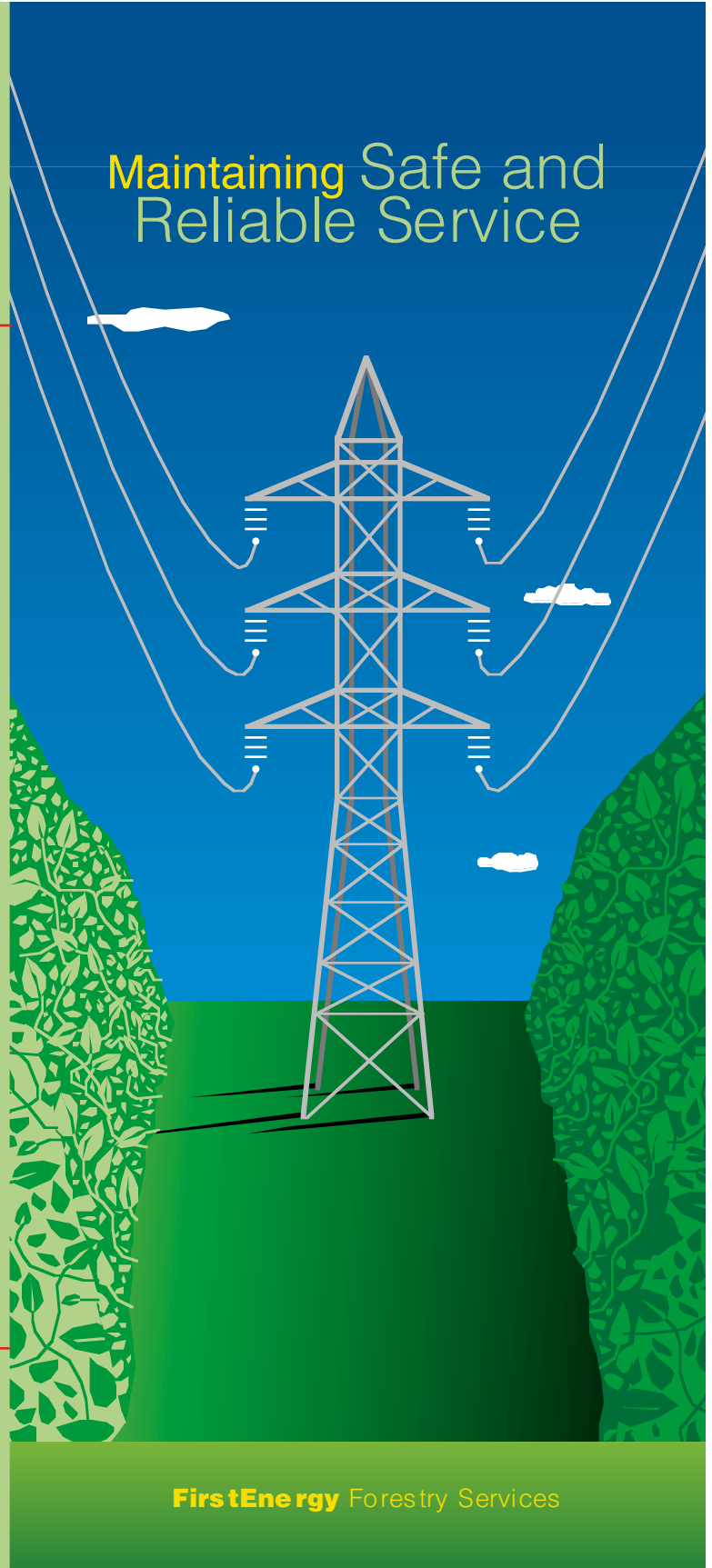


# Maintaining Safe and Reliable Service

**FirstEnergy** is a registered public utility holding company headquartered in Akron, Ohio. Its subsidiaries and affiliates are involved in the generation, transmission and distribution of electricity; exploration and production of oil and natural gas; transmission and marketing of natural gas; and energy management and other energy-related services.

**FirstEnergy**



# Vegetation Management Expertise

**Stretching from the Ohio-Indiana border** to the New Jersey shore, FirstEnergy's long-distance, high-voltage transmission lines provide electricity to distribution systems serving 4.4 million customers, and serve as vital links with neighboring utilities across the country. A key component of maintaining safe and reliable service is keeping our transmission rights-of-way free of incompatible trees and vegetation. The removal of trees under our high-voltage lines rather than pruning serves to minimize the chance of any vegetation contact that might interfere with the transmission lines.

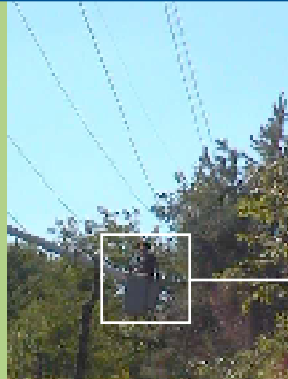
**Transmission rights-of-way corridor** widths vary according to the voltage of the lines and the easement rights that were negotiated with the property owners prior to the lines being constructed. The transmission line corridors are inspected twice a year. Every five years, or more frequently, if necessary, professional vegetation management crews apply vegetation management techniques to prevent trees within the rights-of-way from interfering with the transmission facilities. A variety of techniques – including power saws, EPA-approved herbicides, mechanical equipment, or a combination of methods – is evaluated and the best option is selected for each situation.

**In addition, trees located beyond the edge** of the rights-of-way that may potentially interfere with transmission facilities are evaluated regularly to determine whether pruning or removal is required. Trees that are unhealthy, leaning in the direction of the transmission lines, or significantly encroaching the right-of-way are pruned or removed as part of the preventative maintenance program.

**Proper vegetation management does not** always involve removal of all vegetation. Compatible vegetation that does not interfere with transmission facilities generally is not disturbed. A diverse mixture of grasses, low-growing shrubs and other ground cover preferred by birds, deer and small animals promotes a thriving wildlife habitat within many corridors. In this way, well-managed transmission rights-of-way can provide necessary food and cover for wildlife, while remaining compatible with safety and reliability concerns associated with our transmission facilities.

**For more information about our forestry** practices, visit our Web site: [www.firstenergycorp.com](http://www.firstenergycorp.com). Click on "Customer Care," then the link for "Request Tree Work"

# Preventative Maintenance



**Transmission lines** are the electrical highways that connect North America. Keeping them free of incompatible trees and other vegetation is a responsibility we take very seriously.

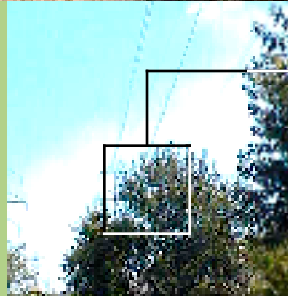
***These photos show instances where trees must be cleared.***

***Work in progress...*** Tree removal is the preferred method for controlling mature trees taller than 10 feet.



***Live trees*** taller than 10 feet within the corridor generally are removed, as are dead, leaning or significantly encroaching trees at the edge of the corridor.

***So long as they do not*** obstruct safe access, low-growing shrubs are allowed to remain in the transmission corridor and provide a viable habitat for wildlife.



***Vegetation management*** enhances the reliability of transmission lines carrying 69,000 to 500,000 volts of electricity from power plants to distribution substations throughout the communities we serve.



***Clearing, rather than pruning, established trees*** from the right-of-way reflects our continuing commitment to maintaining safe and reliable electric service to all of our customers.

# Low-Growth Vegetation

**It's important** to select the right tree for the right place. Planting proper vegetation in and around transmission rights-of-way can avoid wasting time and resources for you and your electric company.

**Only shrubs** that grow no taller than 10 feet at maturity should be planted within transmission rights-of-way. No trees or shrubs should be planted under or within three feet of any pole or tower structure.

**If you are considering** planting shrubs on a transmission right-of-way, please contact our forestry staff or consult your local arborist, nursery professional, or cooperative extension agent for information.

**Listed below** are the customer service telephone numbers for FirstEnergy's electric utility operating companies:

**Jersey Central Power & Light**  
1-800-662-3115

**Metropolitan Edison**  
1-800-545-7741

**Ohio Edison**  
1-800-633-4766

**Penn Power**  
1-800-720-3600

**Pennsylvania Electric**  
1-800-545-7741

**The Illuminating Company**  
1-800-589-3101

**Toledo Edison**  
1-800-447-3333

## Here is a suggested list for planting:

Laceleaf Japanese Maple  
Green Laceleaf Maple  
Azaleas (many subspecies)  
Barberry (many subspecies)  
Silverblotch Dogwood  
Mottled Dogwood  
Bloodgood Siberian Dogwood  
Forsythia (Forsythia species)  
Rose of Sharon (many subspecies)  
Holly (many subspecies)  
Honeysuckle  
Ann Magnolia  
Betty Magnolia  
Sargent Crabapple  
Dwarf Alberta Spruce  
Table Top Pine  
Rhododendron (many subspecies)  
Most Lilacs  
Yews  
Dwarf Hemlocks  
Viburnum  
Dwarf Burning Bush